

Finding a long-term solution for the inpatient mental health services that were provided at the George Bryan Centre



1 What is this about?



We have been looking at our local mental health services. This is because of some changes that have happened in the last few years.



There have been some changes to how the NHS should look after people with mental health needs. It is important we now try to care for most people in their **community** if they do not need to be in hospital.



We know it is best to care for you at home if we can, because:

- People have a better service
- People are more likely to get better
- It helps people stay connected to everyday life, family and friends.



The **George Bryan Centre** in south east Staffordshire used to have beds for adults with serious mental health needs who needed to stay in a hospital. This is also called **inpatient care**.



Closed

In 2019, there was a fire at the George Bryan Centre. The building had to close.

1

What is this about? continued



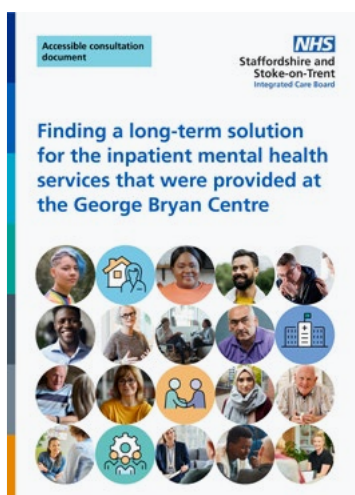
Because of the changes we explained on page 2, we need to find a **long-term solution** for inpatient mental health services.



Our doctors, nurses and other staff have looked at 2 ideas. We have talked to local patients, staff, interested groups and partners to get their views.



Our staff have said there is 1 **viable** (possible and practical) idea for making local inpatient mental healthcare services better.



We are now giving everyone the chance to have their say on this idea. This document explains our idea and how you can have your say.

2

About the George Bryan Centre



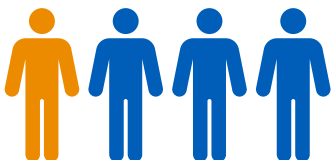
The George Bryan Centre had beds for patients living in Burton upon Trent, Lichfield, Tamworth and the areas around those towns who needed to stay in a mental health hospital.



The West Wing had 19 beds for adults (aged 18 to 65) with serious mental health needs.



The East Wing had 12 beds for older people (aged over 65). Many had **dementia** (where changes to the brain cause memory and thinking problems).



When the George Bryan Centre was open, only about 1 in 4 of the local patients who needed a mental health bed stayed there for treatment. About 3 in 4 of these patients went to other hospitals.

3

Hospital care for serious mental health needs



Patients at the George Bryan Centre tended not to have the most serious health needs.



St George's Hospital



More seriously ill patients need specialist staff and facilities. They went to **St George's Hospital** in Stafford, or other specialist places. For example, **St George's Hospital** has a **psychiatric intensive care unit**, where highly trained staff can look after people having a **mental health crisis**.



St George's Hospital

The George Bryan Centre **did not** have the best facilities to look after people having a mental health crisis. Sometimes, when patients at the George Bryan Centre had a mental health crisis, they needed to be moved urgently to St George's Hospital.

4

Changes we have made since 2019



Closed

In February 2019, a fire destroyed the West Wing of the George Bryan Centre. After this, **Midlands Partnership NHS Foundation Trust** decided to temporarily close the East Wing to keep patients and staff safe.

We made some changes so that people could still get the care they needed while the George Bryan Centre was closed:



St George's Hospital

Patients from the West Wing of the George Bryan Centre moved to St George's Hospital. We provided a ward with 18 beds there.



Community mental health teams help people to stay out of hospital. We have made our teams better and changed how they work.



These changes are to make it easier and quicker for people to get the support they need. Special services help older people with dementia, who can have very complex needs.

5 Our journey so far



Over the last few years, we have been working to find a long-term solution for the inpatient services that were provided at the George Bryan Centre.

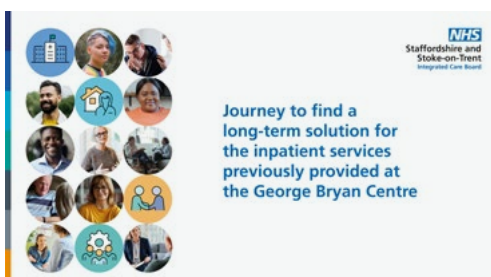


We wanted to understand what services were like and how things could be done better. So we talked to local patients, staff, interested groups and our partners to hear their views.



We have looked at how the people who use and work in our services would be affected by our plans:

- Our staff
- The safety of our services
- Providing fair care for patients
- Travelling times for family and carers.



You can also watch a video about our journey so far:
www.staffsstoke.icb.nhs.uk/mentalhealthconsultation

6 Our idea

We think there is 1 viable (possible and practical) idea: to make the changes we made in 2019 permanent. This means to keep doing what we are doing now.



We will keep our community teams in place, with the changes we have recently made. They give adults with mental health needs and dementia the right support. They help them to stay in their usual homes and in their own communities.



We will not re-open a ward for older adults with dementia at the George Bryan Centre site. We have seen that it is better to care for people with dementia in their own home or community.



St George's Hospital

We will keep the 18 beds at St George's Hospital for people with serious mental health needs who need a hospital stay.

7 Tell us what you think



Do you have any ideas that we have not thought of?



How do you think our idea might affect you or someone you know? Are there any good or bad effects we need to plan for?



When they are in hospital, it is important for patients to see their family and friends. We know some carers and families are worried about travelling to visit people at St George's Hospital. Travelling to Stafford could take them longer and cost more money than travelling to the George Bryan site. **Do you have any ideas to help visitors travelling to Stafford?**



Do you have any ideas for keeping in touch with people when they are in hospital?

8 How you can have your say

There are lots of different ways for you to tell us what you think.
See our [website](#).



Join one of our online events

Friday 3 March 2023, 1pm – 4pm

Thursday 9 March 2023, 10am – 1pm

Visit our website to register for an event.



Come to one of our roadshow events

Lichfield Library

Thursday 23 February, 10.30am – 2.30pm

Asda, Ventura Road, Tamworth

Monday 6 March, 10.30am – 2.30pm

Burton Library

Friday 10 March, 10am – 2pm

Asda, Octagon Centre, Burton

Friday 17 March, 10.30am – 2.30pm

We might need to change some of these places, dates or times. Please check our website for new information. If you do not have access to the internet, you can call us on **0333 150 3069** to ask about this.

8

How you can have your say continued



Answer our survey by **12 midnight on Thursday 23 March 2023.**



**We want to hear from everyone
– especially people who have:**

- Been an inpatient at the George Bryan Centre or St George's Hospital
- Used our community mental health services
- Are family or a carer of someone who has used any of these services.

9 What happens next



No decision has been made about this idea yet.



The **Staffordshire and Stoke-on-Trent NHS Integrated Care Board (ICB)** is the organisation legally responsible for making the decision.



Midlands and Lancashire Commissioning Support Unit will write a report about what people tell us in the survey and at events. The **ICB** will look carefully at this report before they make a decision.



A group called the **Staffordshire Health Overview and Scrutiny Committee** will also look at the report.



We will let you know when a decision is made. We will also update our website.

We want to find a long-term solution for the inpatient mental health services that were provided at the George Bryan Centre. In this document, we explain our idea and how you can have your say. **Please contact us if you need more information, need this in another format, or need help with the survey:**



www.staffsstoke.icb.nhs.uk/mentalhealthconsultation



Call us: **0333 150 3069**



Email us: mlcsu.involvement@nhs.net



Tweet us: [@staffsstokeicb](https://twitter.com/staffsstokeicb)



Follow us on Facebook: [StaffsStokeICB](https://www.facebook.com/StaffsStokeICB)

Produced by NHS Arden and Greater East Midlands Commissioning Support Unit and NHS Midlands and Lancashire Commissioning Support Unit
ardengemcsu.nhs.uk | mlcsu.co.uk

All of the illustrations are copyright Change changepeople.org