



Midlands Partnership
NHS Foundation Trust
A Keele University Teaching Trust

Finding a long-term solution for the mental health services that were provided from the George Bryan Centre

14 October 2021



Contents

Continuing our ongoing conversation

The George Bryan Centre and understanding your experiences

A model of mental health services for the future and your ideas/suggestions

Next steps and closing remarks

Objectives



Hear from staff, patients and carers to understand experiences of mental health services since the fire.



Hear your ideas or suggestions about how we could provide mental health services in the future.

Continuing our ongoing conversation

Making Staffordshire and Stoke-on-Trent the healthiest places to live and work

- **Summer 2019:** public conversation to understand what is working well and what could be improved in health and care services
- **Autumn 2019:** capturing experience of mental health services, including George Bryan Centre
- **March 2020:** involvement work paused due to COVID-19
- **Autumn 2021:** transformation programme re-starts, with sense checks being undertaken in mental health, maternity services and urgent & emergency care
- **Winter 2021/22:** development of future proposals
- **2022:** public involvement in the proposals
- **2022/2023:** decisions made
- **2023:** implementation of decisions made

Listening exercise
2019

COVID-19

Sense check

Informing future
proposals

Public
involvement





Midlands Partnership

NHS Foundation Trust

A Keele University Teaching Trust

The George Bryan Centre

Lisa Agell

Operations Director,

Midlands Partnership NHS Foundation Trust



mpftnhs



@mpftnhs

The George Bryan Centre

- Provided in-patient mental health services to people living in Burton upon Trent, Lichfield, Tamworth and the surrounding areas.
- The West Wing had 19 beds for people aged 18 to 65.
- The East Wing had 12 beds for people aged over 65.
- Early in 2019, the West Wing was destroyed by fire.
- The East Wing was later temporarily closed for safety reasons.



Temporary arrangements

- People in the West Wing on the night of the fire were transferred to St George's Hospital to continue their treatment.
- Anyone new needing an inpatient stay was admitted to St George's Hospital in Stafford.
- The existing community mental health teams were enhanced to support older adults. This included:
 - ☑ Enhanced crisis home treatment with skilled, experienced older adult specialists
 - ☑ Addition of a nursing/therapy lead
 - ☑ New clinical psychologist to focus on older adults
 - ☑ A training plan for the team.



What we were told last time

Clare Neill

Associate Director of Communications and Strategic Partnerships,
Midlands Partnership NHS Foundation Trust

What we were told last time

- Support to **rebuild the George Bryan Centre** like for like.
- **Additional beds.**
- Using the centre as **a base for community-based services** (including young people and all types of mental health support). Some extended this to **other health services and the voluntary sector.**
- The **greater range of services in Stafford** was mentioned – art, music and occupational therapy.
- **Travel** was the most common theme – distance, cost and accessibility of public transport.





Midlands Partnership

NHS Foundation Trust

A Keele University Teaching Trust

Understanding your experiences of mental health services

Stephen Williams, Lead Facilitator



mpftnhs



@mpftnhs

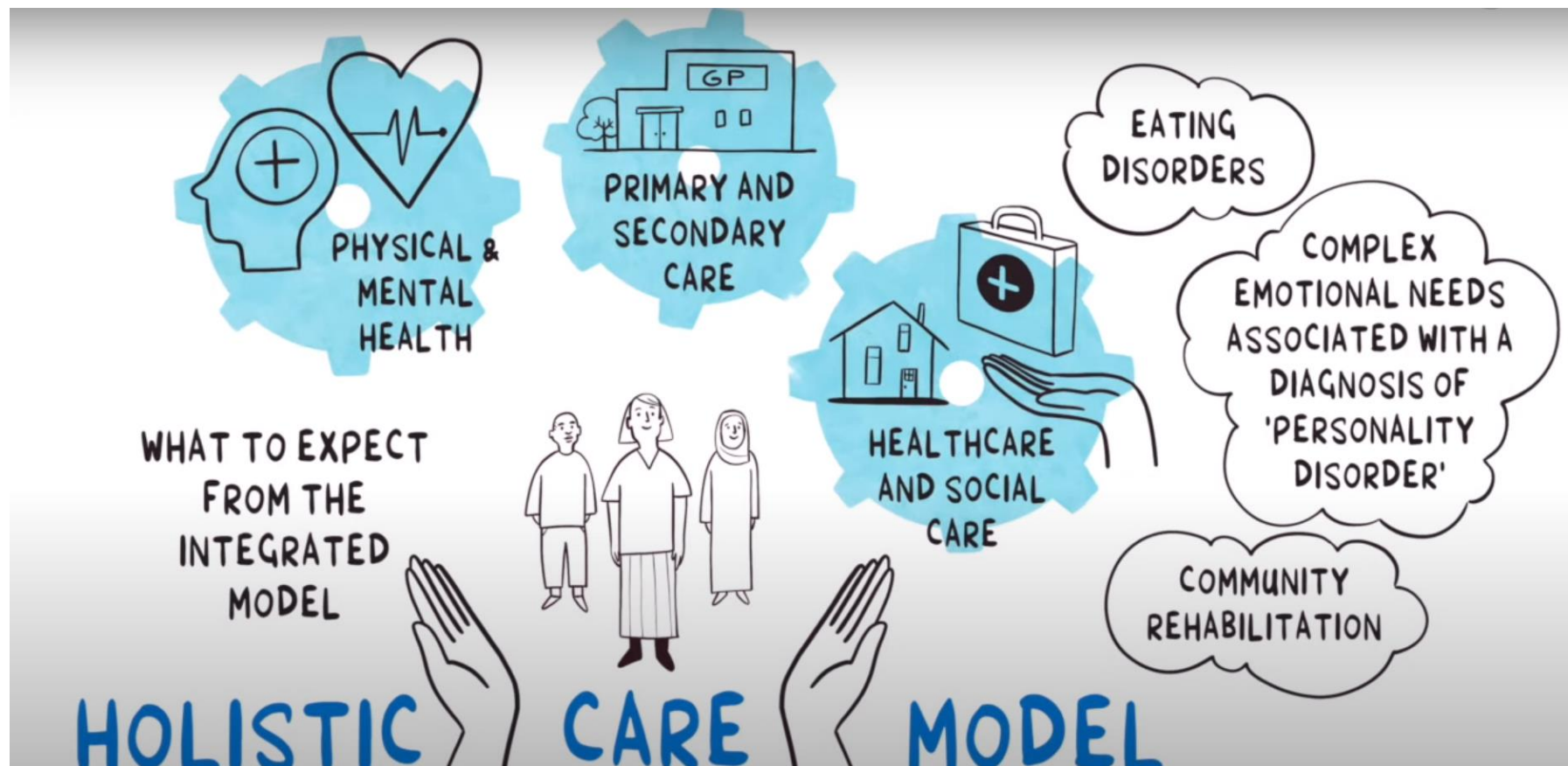
Share your experiences and ideas

1. Please tell us about your experiences of using community mental health services and St George's Hospital since February 2019.
 - What do you feel went well?
 - What challenges or issues did you face?
2. Please tell us your ideas or suggestions about how we could provide mental health services in the future.

A model of mental health services for the future

Dr Emma Lambert/Dr Abid Khan
Consultant Psychiatrist

The national vision of mental health services for the future



www.youtube.com/watch?v=8x-WxYcSBo8



Midlands Partnership

NHS Foundation Trust

A Keele University Teaching Trust

Your views on the model for mental health services for the future

Stephen Williams, Lead Facilitator



mpftnhs



@mpftnhs

Share your views on the model for mental health services for the future

- 1) Now that you've heard about the national model, do you have any other ideas or suggestions about how we could provide mental health services in the future?
- 2) What do you think we need to take into consideration when implementing this model in the local area?

Other ways to share views and experiences, and Next Steps

Nicola Bromage

Head of Strategic Commissioning,
Staffordshire and Stoke-on-Trent CCGs

Other ways to share your feedback

- Complete the survey at <https://gettinginvolved.mpft.nhs.uk/george-bryan-centre-engagement>
- Email for survey support & to provide feedback: mlcsu.involvement@nhs.net
- Phone: 0333 150 2155
- In writing: St George's Hospital, Corporation Street, Stafford. ST16 3SR



Survey closes at
midnight on
31 October 2021

If you need printed copies of the documents, need documents in different formats or languages or need help to complete the questionnaire, please contact us.



Next steps

After this phase of involvement, **we will analyse all the comments we have received and produce a report.**

This will be taken to the Board of MPFT and the Governing Bodies of the CCGs.

The findings will be shared with our clinicians and professionals and used alongside the detailed analysis and data to develop a business case with our final proposals.

This is likely to take several months, subject to the COVID-19 pandemic, as we want to get this right.

Once the final proposals are known we will involve service users, carers, staff and other interested groups before any decisions are made.