

Difficult Decisions | desirable criteria and options scoring workshop report of findings

April 2022

Introduction and background

Recruitment activity and registrant demographic profiling

Desirable criteria weighting event

- Demographic profiling
- Summary of findings

Options scoring workshop

- Demographic profiling
- Summary of findings

Introduction and background

- The Difficult Decisions programme looks at harmonising five policies/procedures across Staffordshire and Stoke-on-Trent
- Two phases of engagement were completed in 2019 and 2021 to gather stakeholder feedback
- Following this engagement, two options appraisal events were held in March 2022
- This report summarises the findings from these events.

Desirable criteria workshop – 4 March 2022

- Participants were asked to weight the desirable evaluation criteria

Options scoring workshop – 22 March 2022

- Participants were asked to evaluate the new proposals for each of the five policies/procedures against the agreed desirable criteria

Procedures



Assisted conception



Hearing loss in adults



Male and female sterilisation



Breast augmentation and reconstruction



Removal of excess skin following significant weight loss

Recruitment activity

Recruitment activity

- Stakeholders were contacted by email and telephone to encourage them to register their interest for the workshops
- Respondents to the 2021 engagement who expressed interest in being informed about future engagement were also contacted
- Participants registered their interest by completing a survey which gathered the details of the procedures they were interested in as well as demographic information.



50

registrants for
Difficult
Decisions

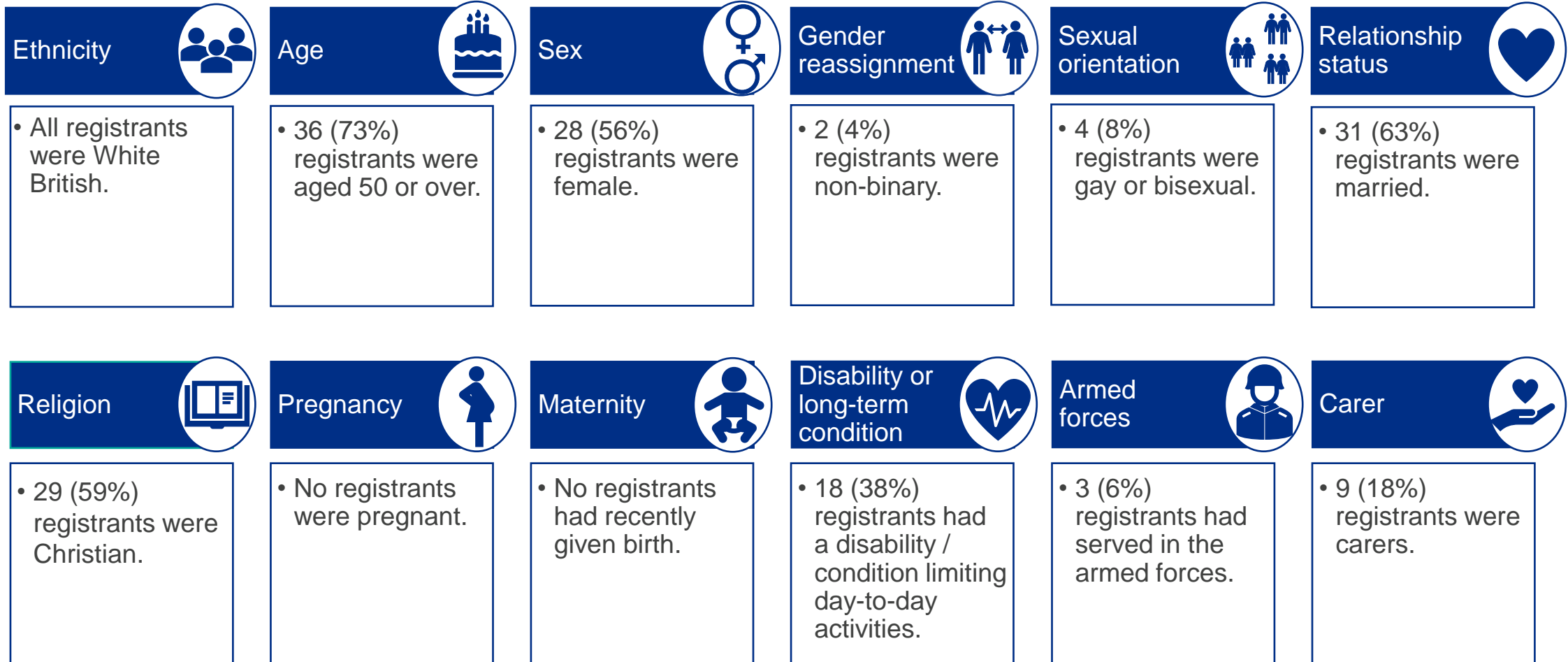
Procedure	No. of registrants interested in this procedure
Assisted conception	15
Hearing aids for non-complex hearing loss	33
Male and female sterilisation	8
Breast augmentation and reconstruction	9
Removal of excess skin following significant weight loss	11

Stakeholders contacted

A range of community groups and organisations were contacted to promote the workshops. The following stakeholders, specific to each of the treatments/procedures were also contacted.

Assisted conception	Hearing loss in adults	Male and female sterilisation	Breast augmentation and reconstruction	Removal of excess skin following significant weight loss
<ul style="list-style-type: none">• Stone Parent and Child Group• Lots for Tots Staffordshire• Staffordshire Fertility Network• Care Fertility Tamworth• Nurture Fertility• Care Fertility• Centre for Reproductive Medicine• Hewitt Fertility	<ul style="list-style-type: none">• RNID• Deaflinks• Deafvibe• Hearing Impairment Team• MPFT Sensory Team• Specsavers• Scrivens• AQP Audiology Staffordshire – Outside Clinic• Industrial Diagnostics Company• Mediscan• National Community Hearing Association	<ul style="list-style-type: none">• Balance Street Surgery, Uttoxeter• Brewood Medical Centre• Abbey Surgery• Audley Surgery• Hartshill Surgery• Midland Community Services• Norfolk Street• Trinity Medical	<ul style="list-style-type: none">• Staffs Cancer LGBT• Breast care nurses at UHNM• Staffordshire Cancer Support Programme• Breast Cancer Now• Local Breast Surgery and Mastectomy Support Group• TLC• The Optimists• Pinfold Pink• Pink Sisters• Terrible Titties Support Group	<ul style="list-style-type: none">• Everyone Health – Weight Management Service – group

Demographic profiling of registrants



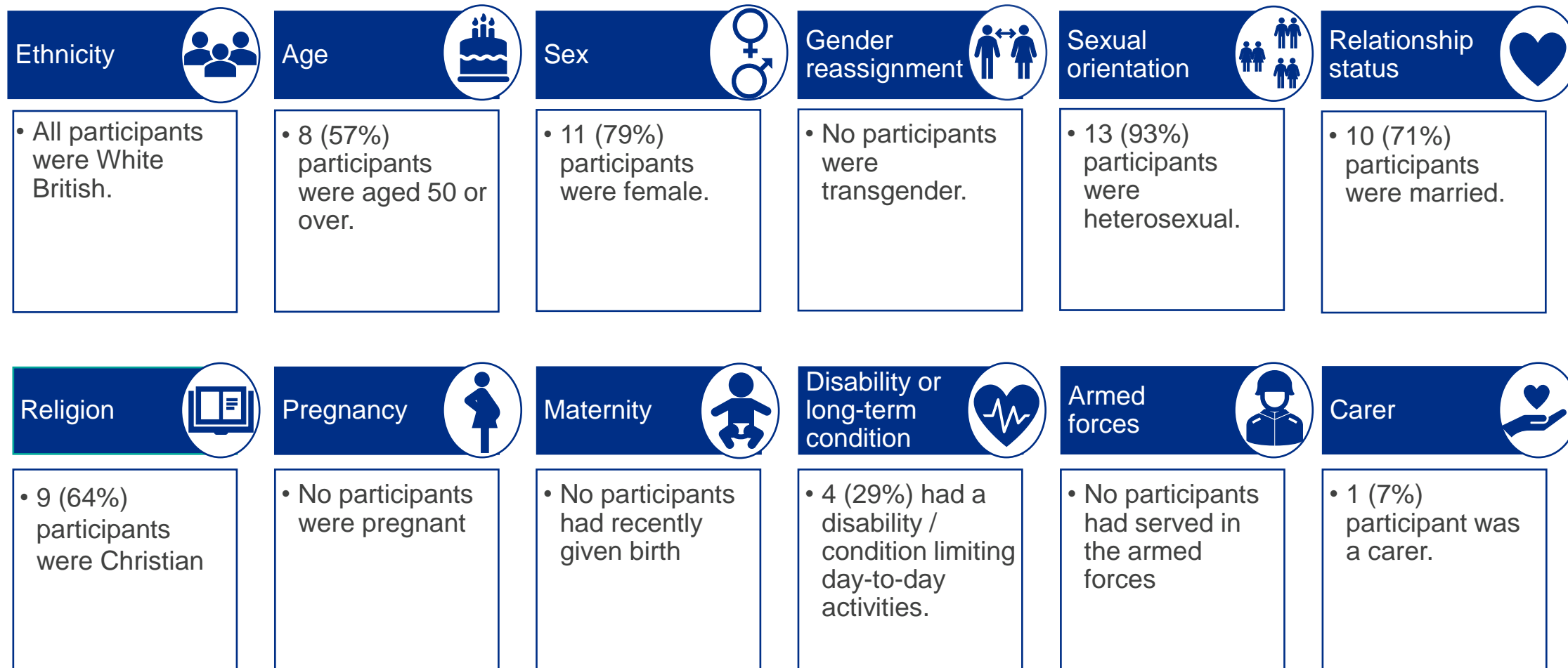
Participant geography: Registrants

	No.	%
Cannock Chase	2	4%
East Staffordshire	7	15%
Lichfield	1	2%
Newcastle-under-Lyme	1	2%
South Staffordshire	2	4%
Stafford	7	15%
Staffordshire Moorlands	4	8%
Stoke-on-Trent	9	19%
Tamworth	4	8%
Other	11	23%
<i>Base</i>	48	

Desirable criteria weighting workshop

Demographic profiling: Desirable criteria workshop

In total, there were 16 participants at the desirable criteria workshop.



Please note, not all participants provided demographic profiling information. The base figure on the following tables indicates how many participants answered each question.

Geography and procedure(s) of interest: Desirable criteria

	No.	%
Cannock Chase	1	8%
East Staffordshire	4	31%
Lichfield	-	-
Newcastle-under-Lyme	-	-
South Staffordshire	2	15%
Stafford	3	23%
Staffordshire Moorlands	-	-
Stoke-on-Trent	1	8%
Tamworth	-	-
Other	2	15%
<i>Base</i>	13	

Procedure	No. of participants interested in this procedure
Assisted conception	5
Hearing aids for non-complex hearing loss	10
Male and female sterilisation	2
Breast augmentation and reconstruction	2
Removal of excess skin following significant weight loss	4
<i>Base</i>	14

Desirable criteria scoring

- The desirable criteria were developed from the 2019 and 2021 engagement. These criteria are:
 - Impact on overall health and wellbeing
 - Clinical benefit
- Participants were asked to score these desirable criteria by allocating 100 points across the two criteria.
- Overall average ratings:
 - **Impact on overall health and wellbeing: 48**
 - **Clinical benefit: 52**

	Impact on overall health & wellbeing	Clinical benefit
Participant 1	70	30
Participant 2	50	50
Participant 3	40	60
Participant 4	20	80
Participant 5	55	45
Participant 6	40	60
Participant 7	50	50
Participant 8	70	30
Participant 9	60	40
Participant 10	40	60
Participant 11	25	75
Participant 12	60	40
Average	48	52

Reasons for 'impact on overall health and wellbeing' weighting



Health and wellbeing is linked to mental health



Health and wellbeing is important but clinical benefit must be a priority



Clinical needs impact on health and wellbeing



Health and wellbeing has large impact on day-to-day life



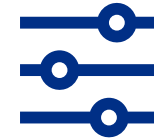
Health and wellbeing should be the priority for patient-centred care



Consider impact of non-treatment on health (e.g. mental health)



More information is required (e.g. clear definitions)



Consider different weightings for the different treatments

Reasons for 'clinical benefit' weighting



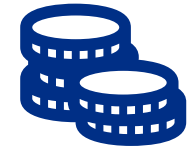
Clinical benefit is important but can be subjective



Need to consider health and wellbeing as well as urgent and emergency care



Treatments without clinical benefit should not be commissioned



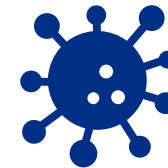
Consider the financial impact of decisions



Clinical benefit should be higher as this will help overall health and wellbeing



More information is required (e.g. clear definitions)



Clinical problems such as infections should take priority

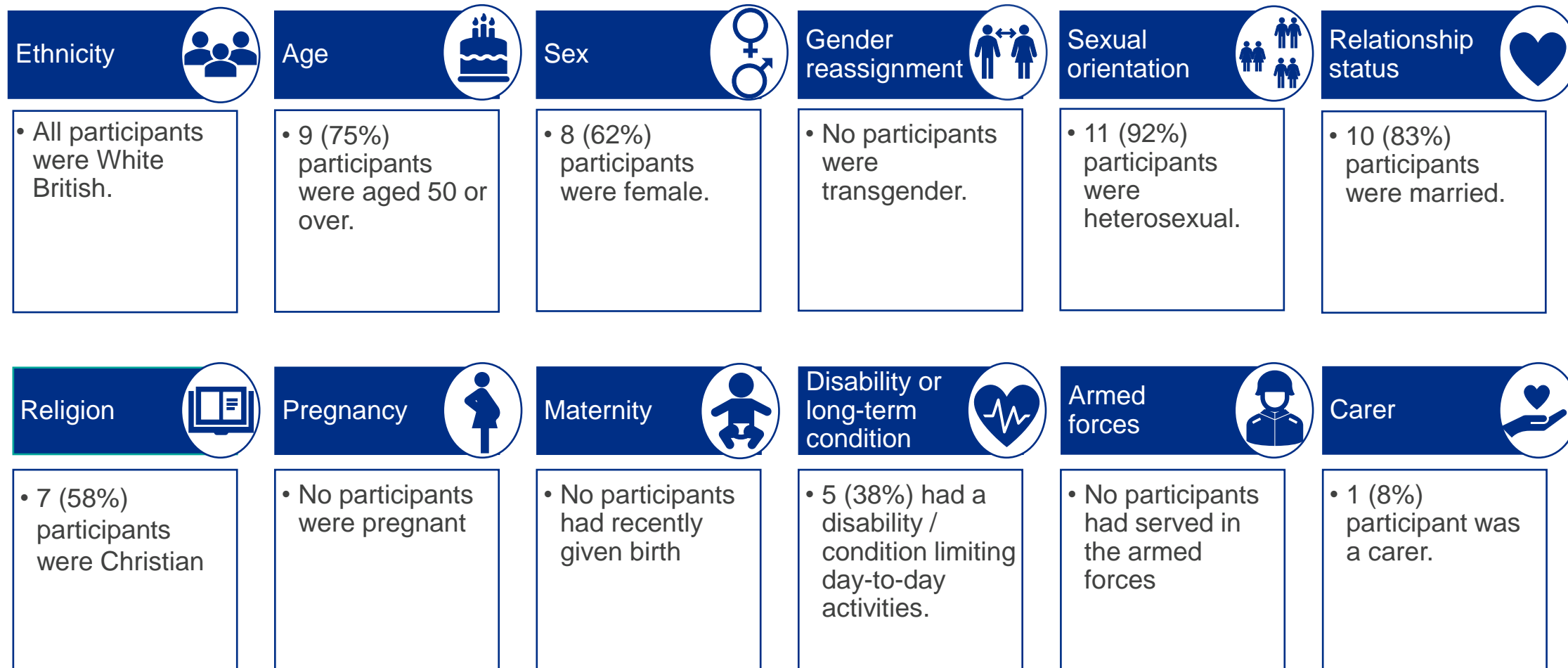


Clinical benefits should be measured alongside other measures

Options scoring workshop

Demographic profiling: Options scoring workshop

In total, there were 14 participants at the options scoring workshop.



Please note, not all participants provided demographic profiling information. The base figure on the following tables indicates how many participants answered each question.

Geography and procedure(s) of interest: Options scoring workshop

	No.	%
Cannock Chase	-	-
East Staffordshire	3	27%
Lichfield	-	-
Newcastle-under-Lyme	-	-
South Staffordshire	1	9%
Stafford	2	18%
Staffordshire Moorlands	1	9%
Stoke-on-Trent	-	-
Tamworth	1	9%
Other	3	27%
<i>Base</i>	11	

Procedure	No. of participants interested in this procedure
Assisted conception	5
Hearing aids for non-complex hearing loss	8
Male and female sterilisation	1
Breast augmentation and reconstruction	1
Removal of excess skin following significant weight loss	4
<i>Base</i>	13

Scoring: Assisted Conception

Proposal scoring



	Proposal 1 - Do not commission		Proposal 2 - Commission investigations only		Proposal 3 - two cycles, women aged up to 39		Proposal 4 - one cycle, women aged up to 39		Proposal 5 - one cycle, women aged up to 35	
	Impact on overall health & wellbeing	Clinical benefit	Impact on overall health & wellbeing	Clinical benefit	Impact on overall health & wellbeing	Clinical benefit	Impact on overall health & wellbeing	Clinical benefit	Impact on overall health & wellbeing	Clinical benefit
Participant 1	2	2	3	3	9	8	7	7	5	5
Participant 2	2	2	2	4	8	7	7	6	6	5
Participant 3	3	1	5	5	8	8	5	4	3	2
Participant 4	1	1	4	4	8	9	5	5	4	5
Participant 5	1	1	2	2	8	8	4	4	4	3
Participant 6	2	2	9	9	7	7	2	2	1	1
Participant 7	1	1	1	1	5	3	4	3	5	5
Participant 8	1	1	1	1	9	8	4	4	2	2
Participant 9	-	-	-	-	-	-	-	-	-	-
Participant 10	1	1	1	1	10	10	10	10	1	1
Participant 11	1	1	1	1	10	10	7	6	2	2
Total sub score	15	13	29	31	82	78	55	51	33	31
Criterion weighting	48	52	48	52	48	52	48	52	48	52
Total score available when weighting applied	720	676	1392	1612	3936	4056	2640	2652	1584	1612
Total score per proposal after weighting	1396		3004		7992		5292		3196	

Scoring: Hearing loss in adults

Proposal scoring



	Proposal 1 - Commission with eligibility criteria		Proposal 2 - Commission with no eligibility criteria	
	Impact on overall health & wellbeing	Clinical benefit	Impact on overall health & wellbeing	Clinical benefit
Participant 1	-	-	-	-
Participant 2	8	8	4	6
Participant 3	5	4	8	5
Participant 4	6	6	4	5
Participant 5	10	10	1	1
Participant 6	3	2	9	9
Participant 7	1	1	10	10
Participant 8	-	-	-	-
Participant 9	1	1	10	10
Participant 10	10	10	10	10
Participant 11	10	10	1	1
Total sub score	54	52	57	57
Criterion weighting	48	52	48	52
Total score available when weighting applied	2592	2704	2736	2964
Total score per proposal after weighting	5296		5700	

Scoring: Removal of excess skin following significant weight loss

Proposal scoring



	Abdominoplasty/ apronectomy: Proposal 1 - Do not commission		Abdominoplasty/ apronectomy: Proposal 2 - Commission with eligibility criteria		Body contouring: Proposal 1 - Do not commission		Body contouring: Proposal 2 - Commission with eligibility criteria	
	Impact on overall health & wellbeing	Clinical benefit	Impact on overall health & wellbeing	Clinical benefit	Impact on overall health & wellbeing	Clinical benefit	Impact on overall health & wellbeing	Clinical benefit
Participant 1	-	-	-	-	-	-	-	-
Participant 2	1	2	8	7	-	-	-	-
Participant 3	1	1	6	6	1	2	7	7
Participant 4	3	5	5	7	1	1	7	6
Participant 5	1	1	10	10	1	1	8	10
Participant 6	3	4	7	6	3	2	6	6
Participant 7	5	7	8	8	2	2	2	-
Participant 8	-	-	-	-	-	-	-	-
Participant 9	-	-	-	-	-	-	-	-
Participant 10	1	10	5	10	1	1	10	10
Participant 11	1	1	10	10	1	1	10	10
Total sub score	16	31	59	64	10	10	50	49
Criterion weighting	48	52	48	52	48	52	48	52
Total score available when weighting applied	768	1612	2832	3328	480	520	2400	2548
Total score per proposal after weighting	2380		6160		1000		4948	

Scoring: Breast augmentation and reconstruction

Proposal scoring



	Proposal 1 - Do not commission for any indication		Proposal 2 - Commission against criteria (cancer and non-cancer)		Proposal 3 - Commission following mastectomy, after burns and prophylactic mastectomy		Proposal 4 - Commission following mastectomy in affected breast only	
	Impact on overall health & wellbeing	Clinical benefit	Impact on overall health & wellbeing	Clinical benefit	Impact on overall health & wellbeing	Clinical benefit	Impact on overall health & wellbeing	Clinical benefit
Participant 1	-	-	-	-	-	-	-	-
Participant 2	3	2	7	7	9	8	5	5
Participant 3	1	1	8	8	10	7	8	8
Participant 4	1	1	6	7	7	6	4	5
Participant 5	1	1	10	10	5	4	5	4
Participant 6	2	2	6	6	8	8	3	3
Participant 7	1	1	7	8	8	8	7	5
Participant 8	-	-	-	-	-	-	-	-
Participant 9	-	-	-	-	-	-	-	-
Participant 10	1	1	10	10	10	10	1	1
Participant 11	1	1	10	10	1	1	1	1
Total sub score	11	10	64	66	58	52	34	32
Criterion weighting	48	52	48	52	48	52	48	52
Total score available when weighting applied	528	520	3072	3432	2784	2704	1632	1664
Total score per proposal after weighting	1048		6504		5488		3296	

Scoring: Male and female sterilisation

Proposal scoring



	Proposal 1 - Do not commission for contraceptive purposes		Proposal 2 - Commission with eligibility criteria for contraceptive purposes	
	Impact on overall health & wellbeing	Clinical benefit	Impact on overall health & wellbeing	Clinical benefit
Participant 1	-	-	-	-
Participant 2	-	-	-	-
Participant 3	1	1	8	10
Participant 4	2	1	7	9
Participant 5	1	10	10	7
Participant 6	2	1	5	7
Participant 7	8	9	10	9
Participant 8	-	-	-	-
Participant 9	-	-	-	-
Participant 10	1	1	10	10
Participant 11	1	1	10	10
Total sub score	16	24	60	62
Criterion weighting	48	52	48	52
Total score available when weighting applied	768	1248	2880	3224
Total score per proposal after weighting	2016		6104	