

# Health and Care Careers

In Staffordshire and Stoke-on-Trent



# A career for you in health and care

We hope this booklet inspires and motivates you to look behind the scenes of the health and social care sector in Staffordshire and Stoke-on-Trent. Take a look at the benefits of working in this diverse, fast-moving and rewarding sector.

**Your future career can sometimes feel a long way off. This booklet could bring it closer.**

I thought you need a degree to work in the NHS

Surely all health careers must be for people who do medical or caring roles

I love the NHS, but I wouldn't want to deal with patients directly

## Make a difference

### Not everyone in health and social care works on the front line

There are over 350 different careers in the NHS and social care. And you'd be surprised how many of them don't require a degree, aren't directly patient-facing, or aren't clinical or hands on.

Although everything that everyone does is for patients, their families, carers and the public, we can all contribute in different ways. We can all make a difference and help others.

Want to leave work every day knowing that what you do really matters? The following pages give you a flavour of the careers on offer in the NHS and social care.



**We are so much more than doctors, nurses and physiotherapists. There are clinical and non-clinical careers in the sector.**

You could be on the front line on a ward or never see a patient and still make a difference to people's lives. From the person who manages the finances to the clerk who books in an operation, everyone is making a contribution to vital services.

**It all comes down to skills, attitude and teamwork.** How many people can leave work every day knowing that what they did really mattered?



Grouped into **15 colour-coded career categories**, each with its own icon and some example job roles included.



Some roles may be suitable for an apprenticeship. Remember that these are just some of more than 350 careers available in the NHS and Social Care.

You can also find information about the varied health and social care employers across Staffordshire and Stoke-on-Trent, as well as some of the job roles they recruit to.

Find out more about pathways, training opportunities, placements and volunteering available within each organisation.

# Career Categories



## Allied health professionals (AHPs)

Specialists who treat and rehabilitate. Occupational therapist, Physiotherapist, Dietitian, Art therapist



## Ambulance service team

More than flashing blue lights. You'll be a caring, calm, good communicator. Paramedic, Call handler



## Dental team

Looking after the oral health and wider health of patients. Dentist, Hygienist, Dental technician



## Direct Care Roles

Working directly with those in the community who need extra care and support. Activities worker, Personal assistant, Support worker



## Doctors

Preventing ill health, treating disease and improving wellbeing in 60+ specialties.



## Estates and facilities

Ensuring clean, safe buildings, feeding patients and delivering goods safely. Chef/cook, Porter, Driver, Caretaker



## Health informatics

One of the fastest growing areas in health and care. The experts who use information and technology to provide better care for patients. Clinical coder, Health records assistant, ICT support technician, Librarian



## Healthcare science

Experts in technology and science to prevent, diagnose and treat disease. Clinical scientist, Healthcare scientist, Medical engineer



## Management

Managing people, money, buildings and projects to keep health and social care organisations moving forward.

Finance manager, Human resources (HR) manager, Practice manager, Registered manager



## Medical associate professions

Supporting doctors and nurses to release their time for more complex cases.

Anaesthesia associate, Physician associate, Surgical care practitioner



## Midwifery

Supporting women in communities and hospitals before, during and after childbirth.



## Nursing

A huge range of specialisms including children's nursing and mental health. Delivering care across health and social care in hospitals, care homes, prisons and the community. District nurse, General practice nurse, Neonatal nurse, Nursing associate



## Pharmacy

Dispensing and offering advice about medicines for staff and patients.

Pharmacists, Pharmacy Team



## Psychological professions

Tackling mental health problems and promoting wellbeing. Counsellor, Peer support worker, Psychologist



## Public health

Protecting people from threats to their health and helping them stay healthy. Health visitor, School nurse



## Wider health and social care team

Services that keep the NHS running 24 hours a day, 365 days a year.

Phlebotomist, Receptionist, Social worker



# Staffordshire and Stoke-on-Trent

## A great place to learn, live and work



### Learn

From chart-topping university courses to state-of-the-art academies and everything in between. A passion for innovation, learning and research. Proud to be Home to **2 respected universities**, **5 Further Education (FE) colleges**, and **over 400 schools** including **11 independent schools**.



### Live

**A thriving, diverse county with a proud history, famous attractions and areas of natural beauty.** Green, open spaces, characterful villages, market towns, city living, smart new communities and more, whatever stage of life you're at there's a perfect place here to call home. An abundance of culture and attractions on your doorstep and brilliant links to nearby major cities. *It's what makes living in Staffordshire and Stoke-on-Trent something to really shout about.*



### Work

You'll find a positive, can-do attitude and an energy and spirit across Staffordshire and Stoke-on-Trent. It's a place where you can achieve whatever you want to achieve. We are looking to attract candidates from the broadest pool and are really interested in receiving applications from people with different backgrounds, skills, and experiences.



# Health and Care Careers

Staffordshire and Stoke-on-Trent



**2** acute hospital trusts

**145** GP practices

**2** local authorities

**4** hospices

**2** Voluntary sector networks

**331** care homes

**1** community NHS trust

**1** mental health trust

**1** ambulance trust

- 1** Stoke-on-Trent City Council
- 2** Staffordshire County Council
- 3** Support Staffordshire
- 4** Voluntary Action Stoke on Trent (VAST)
- 5** West Midlands Ambulance Service NHS Foundation Trust

- 6** Midlands Partnership University NHS Foundation Trust
- 7** North Staffordshire Combined Healthcare NHS Trust
- 8** University Hospitals of North Midlands NHS Trust
- 9** University Hospitals of Derby and Burton

## Midlands Partnership University NHS Foundation Trust

**Midlands Partnership University NHS Foundation Trust** provides physical and mental health care, learning disability and adult social care services across Staffordshire, Stoke-on-Trent, Shropshire and Telford & Wrekin. In addition, we provide services on a wider regional and national basis including perinatal, eating disorders and forensic services. We deliver out-of-area sexual health services, and our Inclusion service offers psychological and drug & alcohol services in the community and in prisons.

As an organisation we serve a population of 1.5 million and currently employ around 8,500 members of staff.

MPFT is a diverse and inclusive Trust with teams that are empowered and supported to deliver care in a way which is consistent with our values:

- Putting people at the heart of what we do
- Empowering people to improve care and wellbeing
- Delivering better health, better care in partnership

At MPFT, our mission is *'Together, we are making life better for our communities'*. Our people make a real difference to people's lives and we believe that by leading by example, being caring and compassionate, honest and trustworthy, respectful, listening to and engaging with our colleagues, service users and patients we will bring our values to life; improving the quality of care we provide as well as making MPFT a fantastic place to work.



### Contact

**Email Address:** [careerdevelopment@mpft.nhs.uk](mailto:careerdevelopment@mpft.nhs.uk)

**Website:** <https://www.mpft.nhs.uk/joinus>





North Staffordshire  
Combined Healthcare

NHS Trust

T-L

A

## North Staffordshire Combined Healthcare Trust

**North Staffordshire Combined Healthcare NHS Trust** is a leading provider of inpatient and community mental health, learning disability, substance misuse and primary care services in the West Midlands.

We were delighted and proud that in November 2022 we won the prestigious award of 'NHS Trust of the Year' at the National Health Service Journal Awards. This was the first time a mental health trust had won this accolade. This is the latest step in our continuing journey of improvement and achievement and positive proof that our determination to deliver our vision - to be Outstanding – in ALL we do and HOW we do it – burns as strong and as bright as ever.

We are proud to be an Outstanding trust, but we constantly make clear - to our leaders, our people, our service users and stakeholders - that we never complacent and that our journey of improvement always continues to deliver our vision.

We provide system-wide leadership for a range of key areas across Staffordshire and Stoke-on-Trent, as well as continuing to strengthen integration alongside our partners as we develop and advance the NHS vision for integrated care and new models of delivery towards a strong Staffordshire and Stoke-on-Trent Integrated Care System. We also partner with a number of anchor Institutions, particularly in further and higher education, including Keele University and Staffordshire University.



### Contact

**Email Address:**

**Website:** <https://www.combined.nhs.uk/join-our-team/>



## Staffordshire County Council

At Staffordshire County Council, Health and Care take the lead on our responsibilities concerning Adult Social Care and Public Health. Collaboration is at the heart of our approach both within the council and with our partners, as we strive to enhance and safeguard the well-being of the people in Staffordshire.

We have key areas within Health and Care, which are:

- Adult Social Care and Safeguarding
- Care Commissioning
- Care and Support provided by Staffordshire County Council
- Public Health



Whether you're completely new to social care, or you have come to us with plenty of experience, we'll support you to achieve amazing things. With a variety of career options on offer, you'll have the chance to make the most of your ambition.

### Contact

**Email Address:** [talent@staffordshire.gov.uk](mailto:talent@staffordshire.gov.uk)

**Website:** <https://www.careersatstaffordshire.co.uk/health-and-care/>





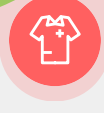
T-L

A

## Staffordshire Training Hub

The **Staffordshire Training Hub** is funded by NHS England and work closely with the NHS and organisations in Staffordshire and Stoke-on-Trent.

Our main goal is to provide our Primary Care staff with high-quality courses and programmes of education and wellbeing - so they feel confident to do their job and deliver excellent patient care. We are passionate about investing in the future Primary Care workforce, by recruiting and supporting apprentices – giving them the opportunity to learn and succeed in a supportive environment.



In line with our Mission Statement, *'Think Training, Think Staffordshire Training Hub'*, the team's goal is to ensure the STH is the 'go to' place for Primary Care to access education, training, development, recruitment and retention information and opportunities.

### Contact

**Email Address:** [traininghub@gpfirst.net](mailto:traininghub@gpfirst.net)

**Website:** [www.staffordshiretraininghub.com](http://www.staffordshiretraininghub.com)





City of  
**Stoke-on-Trent**

T-L

A

# Stoke-on-Trent City Council

**Stoke-on-Trent City Council** is a local government organisation with around 4,600 employees, delivering 700 services to more than 260,000 residents.

Our goal is to create a better future for everyone in our city by reducing inequalities and enriching our communities through improving health and social care, housing, transport, economic development, environmental sustainability and family support.



We want to make sure that if you're born in Stoke-on-Trent, you have the best start in life with plenty of opportunities to build healthy, happy, and successful lives, doing what you love to do. This includes having access to fair employment, sustainable living places, and a high standard of living. It is an exciting time to come join us here at Stoke-on-Trent City Council, where you will be supported to thrive and achieve your potential!

## Contact

**Email Address:** [adultsworkforce@stoke.gov.uk](mailto:adultsworkforce@stoke.gov.uk)

**Website:** <https://recruitment.stoke.gov.uk/>





University Hospitals of  
Derby and Burton  
NHS Foundation Trust

T-L

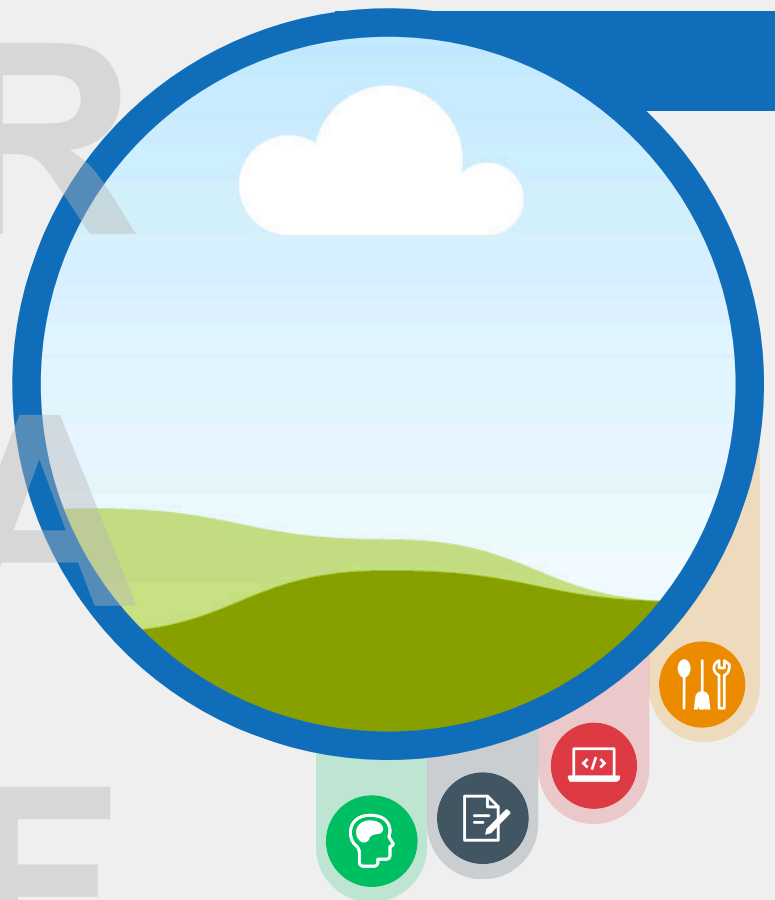
A

## University Hospitals of Derby and Burton

At **University Hospitals of Derby and Burton**, we have an established track record for delivering exceptional care together, and are always on the lookout for more dedicated professionals to join our teams.

With hundreds of roles, departments, and specialties across many clinical and non-clinical areas to choose from, and professional development in place to help you grow, there are endless opportunities for you to make your mark at UHDB.

We aspire to consistently provide safe and compassionate care to patients across our sites, and know that having the right people with the right skills, behaviours, and values at our Trust plays an important role in this.



### Contact

**Email:** [uhdb.workexperience@nhs.net](mailto:uhdb.workexperience@nhs.net)

**Website:** <https://www.uhdb.nhs.uk/work-and-learn>





**University Hospitals  
of North Midlands**  
NHS Trust

T-L

A

## University Hospitals of North Midlands, NHS Trust

**University Hospitals of North Midlands  
NHS Trust** is one of the largest and most  
modern in the country.



Based across two sites, Royal Stoke  
University Hospital in Stoke-on-Trent and  
County Hospital in Stafford, we are proud to  
serve around three million people and we're  
highly regarded for our facilities, teaching  
and research.



We are the specialist centre for major trauma for  
the North Midlands and North Wales.

### Contact

**Email:** [Recruitment.mail@uhnm.nhs.uk](mailto:Recruitment.mail@uhnm.nhs.uk)  
[medical.staffing@uhnm.nhs.uk](mailto:medical.staffing@uhnm.nhs.uk)

**Website:** <https://www.uhnm.nhs.uk/jobs>





**NHS**

**West Midlands  
Ambulance Service**

University NHS Foundation Trust

A

## West Midlands Ambulance Service University NHS Foundation Trust

The West Midlands Ambulance Service University NHS Foundation Trust serves a population of 5.6 million across Shropshire, Herefordshire, Worcestershire, Staffordshire, Warwickshire, Coventry, Birmingham and Black Country conurbation.



We respond to 4,000 '999' calls each day operating from 15 hubs across the region. We also provide non-emergency patient transport services across some parts of the region and Cheshire for patients who are unable to travel unaided to hospital, completing around 1 million journeys each year.

We have a staff of 7,5000 and are rated as 'Good' by the CQC and our Education and Training Academy was rated by OFSTED as 'Good' earlier this year.

### Contact

**Email:** [enquiries@wmas.nhs.uk](mailto:enquiries@wmas.nhs.uk)

**Website:** [www.wmas.nhs.uk](http://www.wmas.nhs.uk)



# Journey to work

Wherever you start, that's OK



## You can join at any stage of your life.

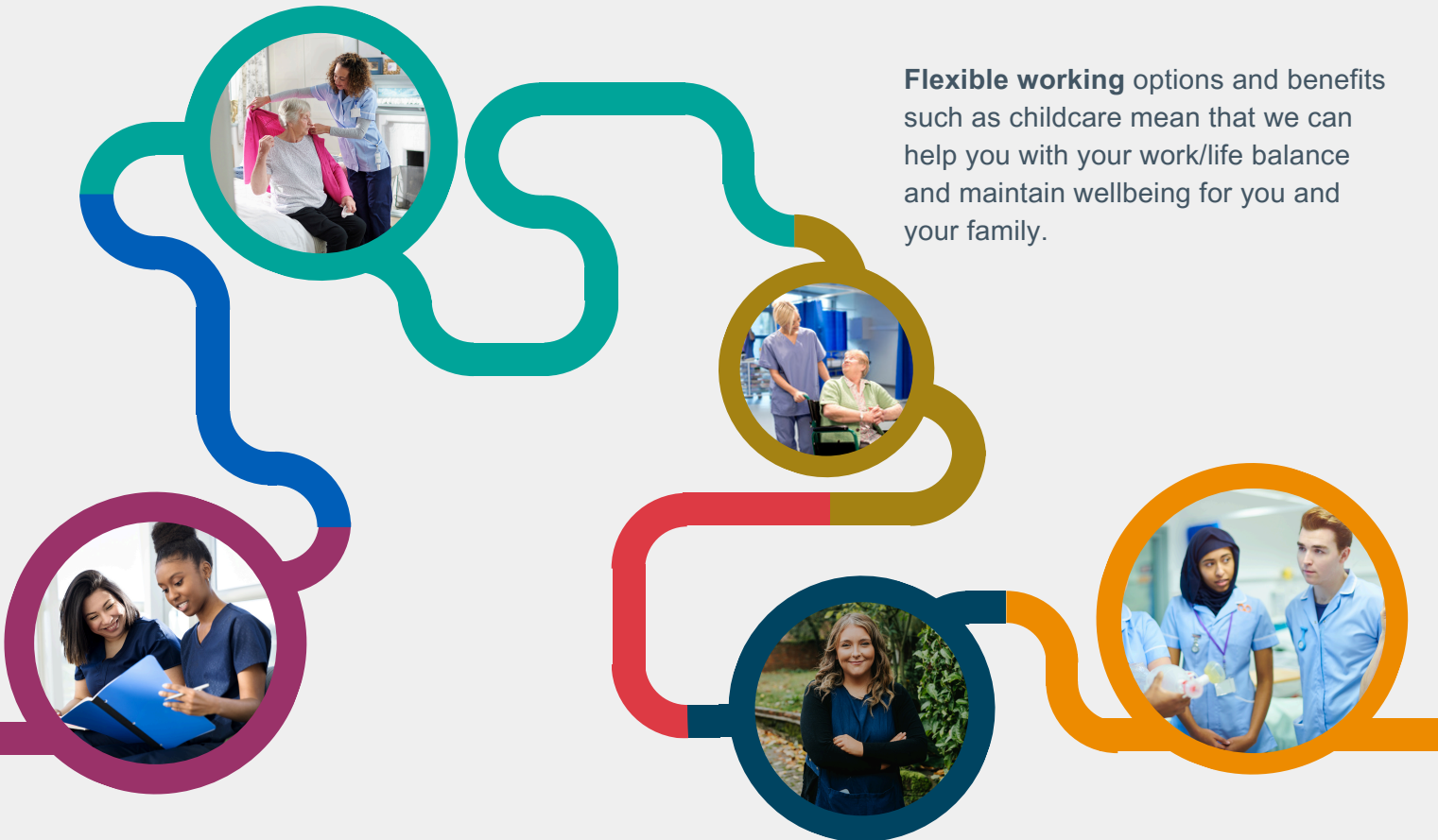
You may be at school choosing options or you could be at college considering your next step. Some roles have a specific training routes and need academic qualifications. For others, you can study a range of different subjects and apply them to jobs in the NHS. We also have roles suitable for apprenticeships, conversion courses and on-the-job training.



## Looking after people, looking after you

**Everyone counts** and that applies to staff as much as patients. Compassion care comes from staff who are well looked after. We'll look after you and help you fulfil your potential. There are development opportunities and access to training courses for all full- and part-time staff.

**Flexible working** options and benefits such as childcare mean that we can help you with your work/life balance and maintain wellbeing for you and your family.



## We're with you on the journey.

Just because you come in with one set of qualifications (or none at all), doesn't mean you can't move across and up into other careers over time. Health and care is a great place to grow and learn. The pace of change and technological development brings a constant demand for new skills and experience.

# Skills

As a **Cornerstone Employer** we are committed to working with local schools and colleges to ensure that employability skills are encouraged and practiced throughout a young persons academic life.



## We're looking for people with the right values

Health and social care employers across Staffordshire and Stoke-on-Trent believe that **there is a job for anyone who shares their values.**

### Working together for patients

Teamwork across the makes life better for the people we serve

### Respect and dignity

It's a quality not a qualification to be able to treat our patients with respect

### Everyone counts

We make sure nobody is excluded, discriminated against or left behind

### Commitment to quality of care

Whatever NHS career you choose, we want people with high standards

### Improving lives

You can make patients' lives better, whether you're a secretary or a surgeon

### Compassion

We want people who really care to come and work for us

# Virtual Work Experience

All programmes are free to apply and available to anyone aged 13+ living in Staffordshire and Stoke-on-Trent

## VWEX provides

In-depth, interactive and informative virtual work experiences from a range of health and care professionals and employers across Staffordshire and Stoke-on-Trent



## To help students

Understand the health and social care sector, the range of employers and job roles



## So students can

Experience the workplace, gain remote access to clinical settings, choose the right career path and boost their CV



## On Demand VWEX Programmes

### Helping students find the right career path

Health and social care is one of the largest employment sectors in Staffordshire and Stoke-on-Trent. Find out more about some of the 350 careers by exploring our VWEX programmes:



Maternity



Mental Health



Primary Care



The Hospital



Social Care

To find out more about the professions within a health and social care setting, scan here



# Volunteering

## There are many benefits to volunteering



Gain and develop skills, experience and practical insights



Explore different career paths



Meet new people



Boost confidence



Improve emotional wellbeing

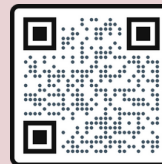


We work closely with local partners **VAST** and **Support Staffordshire** who provide volunteer brokerage across Staffordshire and Stoke-on-Trent.

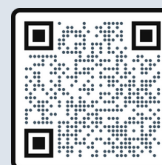
They have a really broad range of volunteering opportunities with local community organisations and within health and care so will be happy to help find the right role for you.



VAST is a registered charity, providing specialist services to the Voluntary, Community and Social Enterprise (VCSE) Sector in Stoke on Trent and North Staffordshire.



Support Staffordshire is the largest independent voice VCSE in Staffordshire.



Here in Staffordshire and Stoke-on-Trent we're passionate about giving our workforce training and development opportunities wherever you may choose to start your professional story.

**T Levels are 2 year courses designed for young people aged between 16-19 years.**

They are **equivalent to 3 A Levels** and have been developed in partnership with employers and education providers. T Levels aim to prepare students for further or higher education, skilled employment, or an apprenticeship.

T Levels include a dual approach of classroom learning and on the job experience. The qualification requires a **45-day placement** which could be in one technical setting or a rotation, depending on the course of study.



Maisie's story



The T Levels course includes core theory, concepts, skills, and knowledge needed for a career in the chosen sector.

Maisie as she tells you the story of her T Levels journey and the advantage of the time she spent on a meaningful Radiography placement at the University Hospitals of North Midlands.

**For more information on T Levels, visit the T Levels website**



**Starting an apprenticeship can be the first step of your journey into work.**

Apprenticeships are a great way to gain 'on the job' experience, combined with studying for a formal qualification, all while earning a wage.

Apprenticeships can range from **12 months to 5 years**, giving you sufficient time to learn new skills and gain knowledge in the area you see yourself in the future. You can do an apprenticeship in a wide range of areas from health care workers, administrators or radiology.

Aysuda's story



Adils' story



As an **Integrated Care System** we offer rotational apprenticeship schemes that give you the opportunity to enhance your skills in a range of health and care settings. This will provide experience and competencies that will be beneficial when you are looking for permanent employment or to enable you to progress along your chosen career pathway.

# Home to 5 Further Education (FE) Colleges

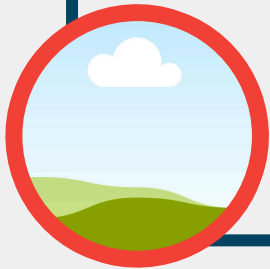
Burton and South Derbyshire College



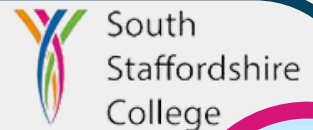
City of Stoke-on-Trent Sixth Form College



Newcastle and Staff Colleges Group



South Staffordshire College



Stoke-on-Trent College



# 3 respected universities

# Keele

UNIVERSITY



Located in the Staffordshire countryside and just five miles from Stoke-on-Trent, **Keele** is world renowned for its breadth of teaching and research that tackles the world's most urgent problems.



Choose **Staffordshire University** for its friendly vibe, world-class facilities and specialist courses.



University of Derby



# Health and Care Careers

In Staffordshire and Stoke-on-Trent

To find out more about careers in health and social care across Staffordshire and Stoke-on-Trent:



Health and Care People Team



@HCPeopleTeam



@HCPeopleTeam



@HCPeopleTeam



<https://staffsstokeics.org.uk/>



ICSPeopleprojects@mpft.nhs.uk

