



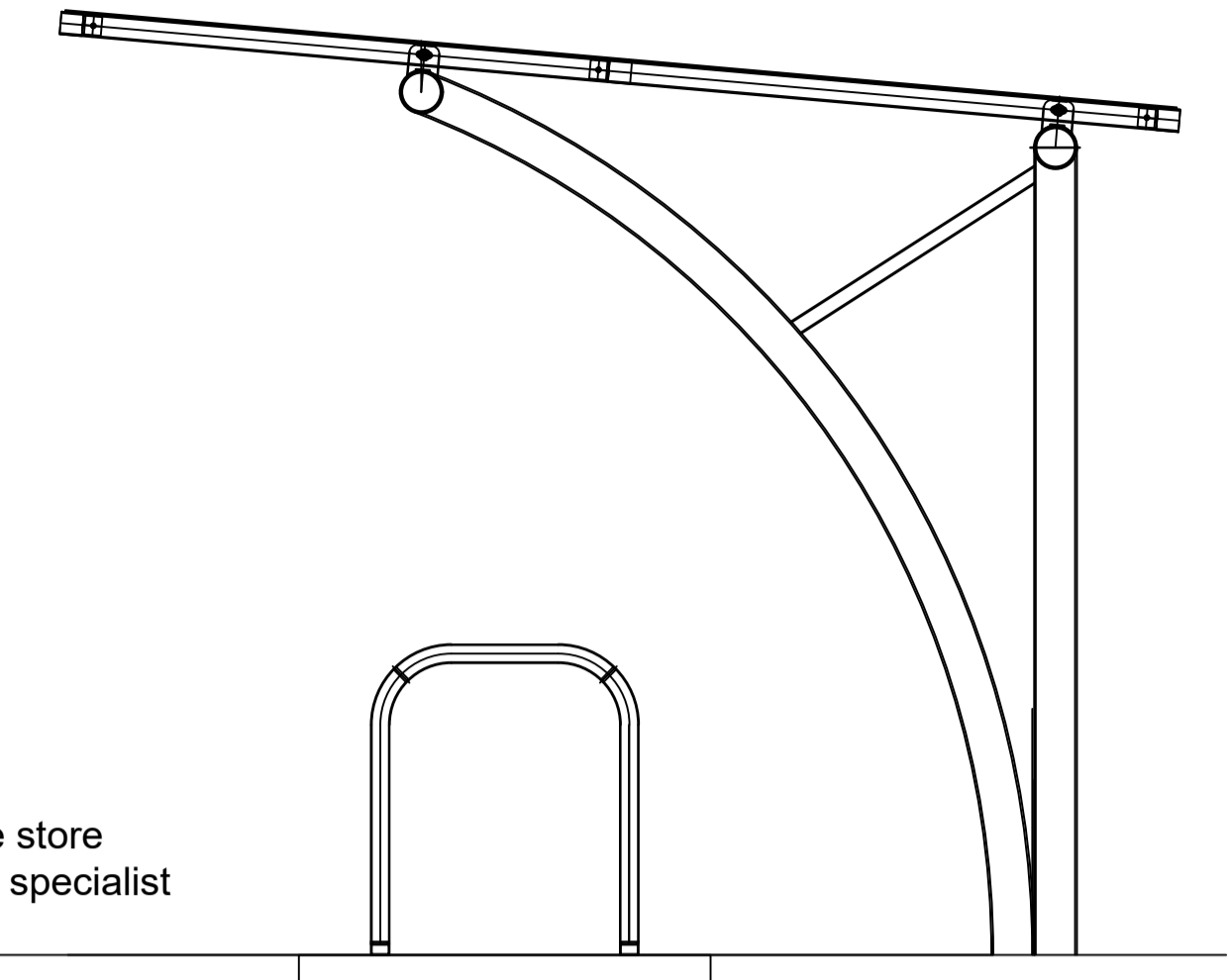
SITE PLAN Scale 1:200

**KEY**

**STEEL RAILINGS - 1.8m**  
2 metre high Econo Palisade Fencing c/w Manually operated vehicle and pedestrian gates.

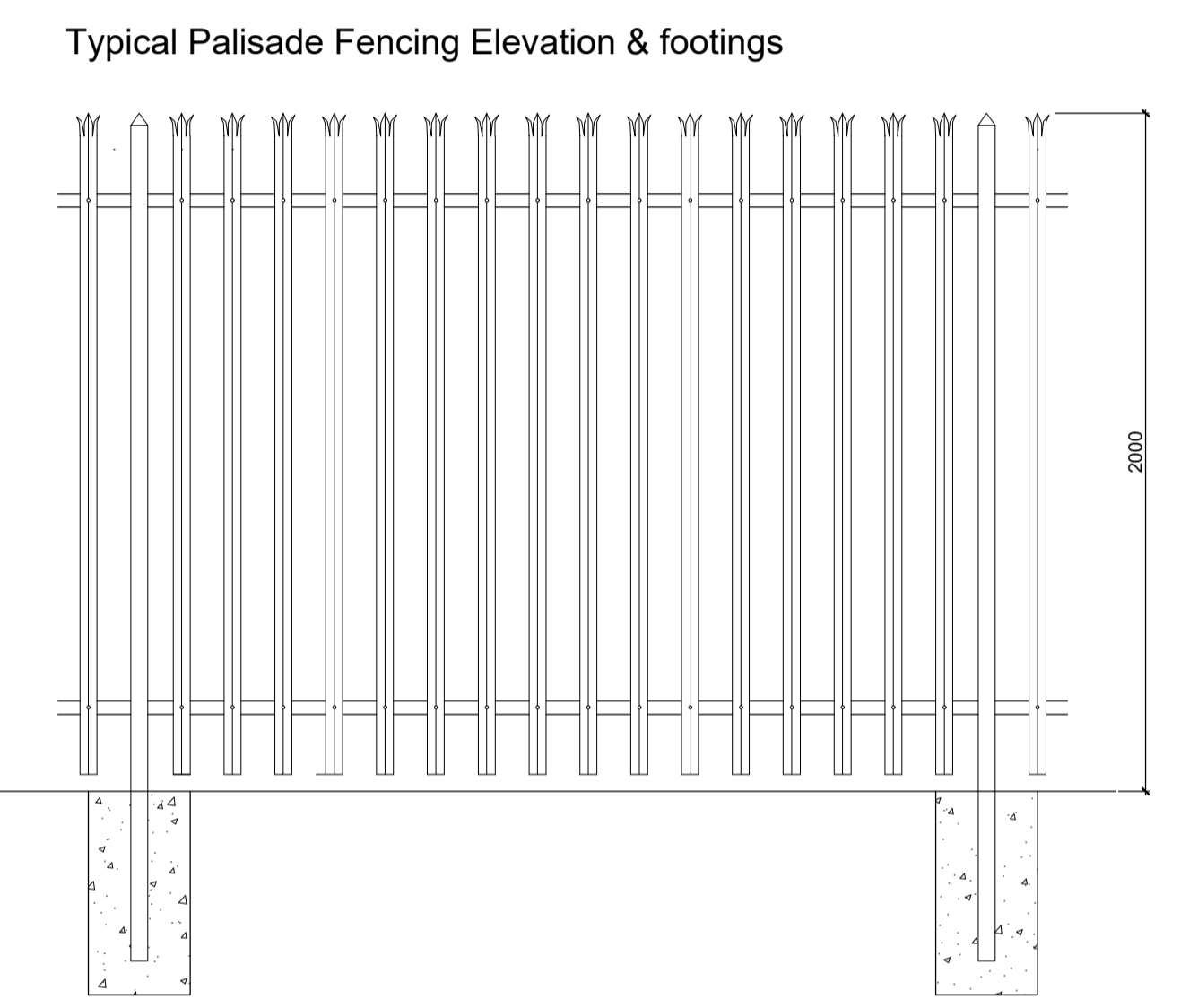
Indicative boundary treatment shown subject to all approvals including Planning (condition), Client, Local Authority, and Secured By Design.

**1 BICYCLE STORE**  
1:20



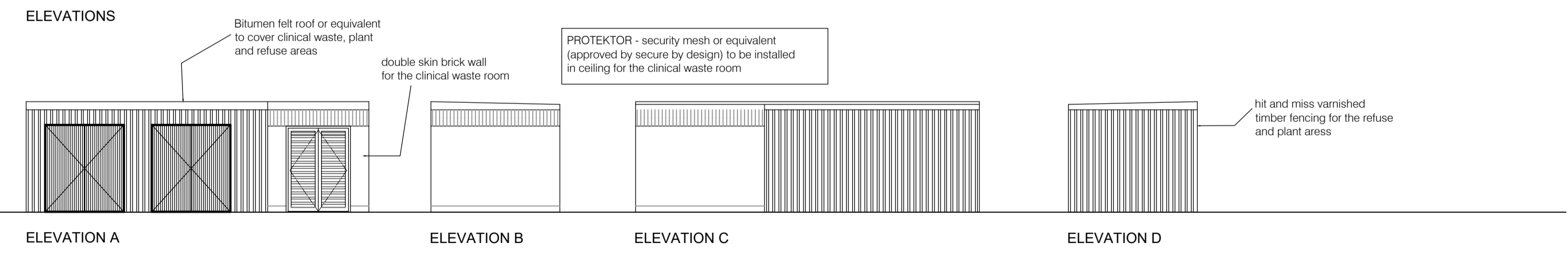
Typical Elevation  
Sheffield stand cycle store with cycle shelter by specialist

**2 BOUNDARY FENCING**  
1:20

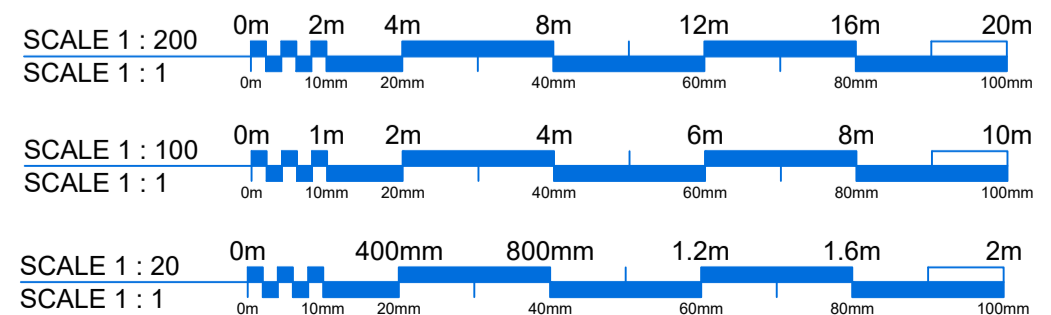


Typical Palisade Fencing Elevation & footings

**3 REFUSE, PLANT & CLINICAL WASTE STORE**  
1:100



**nicol thomas**  
architects project managers construction cost consultants principle designers  
Registered in England and Wales. Reg No. 2140639  
Quality Assured to BS EN ISO 9001:1994 Certificate Number GB 4723  
Suite 108 1st Floor Fort Dunlop Fort Parkway Birmingham B24 9FD  
(Registered Office) t:01902 398222 f:01902 394080 e:birmingham@nicolthomas.com  
Also at Oldham  
Do not scale from this drawing. All dimensions must be checked and verified before preparing production drawings or commencing works. This drawing and its design is the copyright of Nicol Thomas Ltd and may not be reproduced in any form whatsoever without their prior express written consent.



**nicol thomas**

Revision	Date	Details	Drawn / Chk

<b>TENDER</b>	<b>Client:</b>	Stoke on Trent CCG		
	<b>Job:</b>	GP Surgery - Greendock street, longton south		
	<b>Drawing title:</b>	External Works Plan		
	<b>Drawing Number:</b> (Job number)	B6559	(T)	8.00
	<b>Scale:</b>	1:100, 1:200, 1:20 @A1		
	<b>Date:</b>	August 2019		
<b>Drawn by/ checked by:</b>	AL / JB / AB			