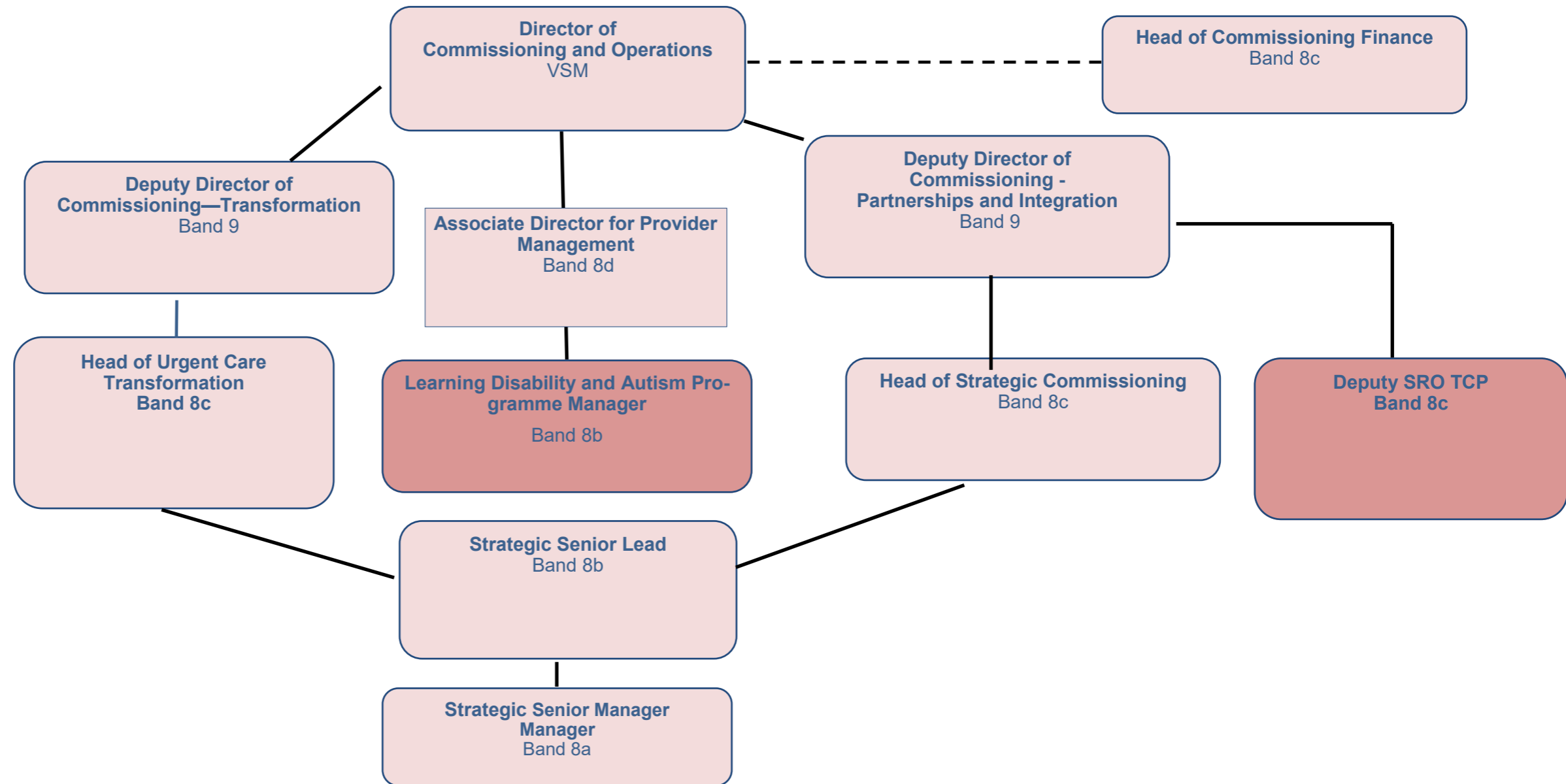
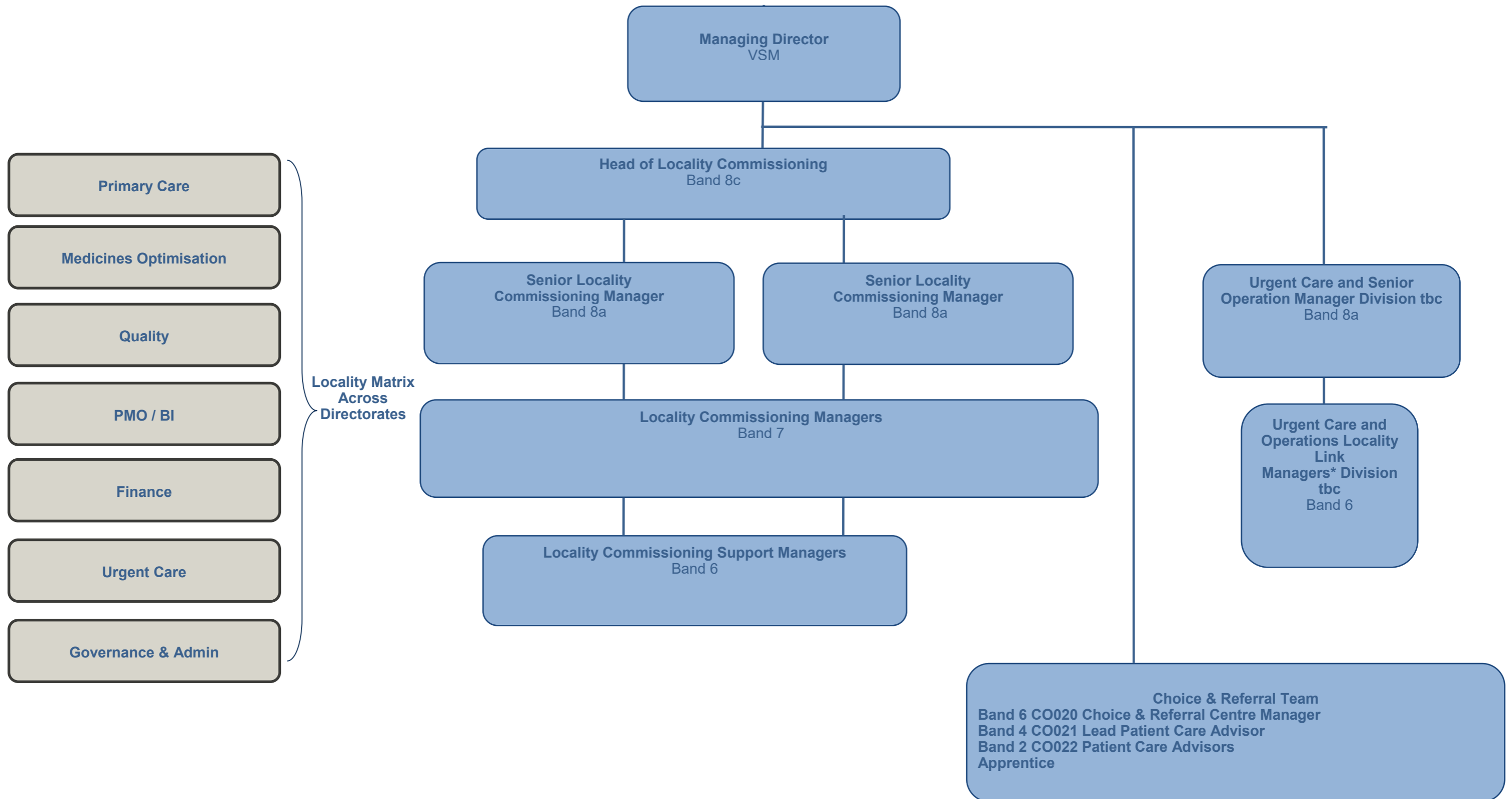


## COMMISSIONING AND OPERATIONS

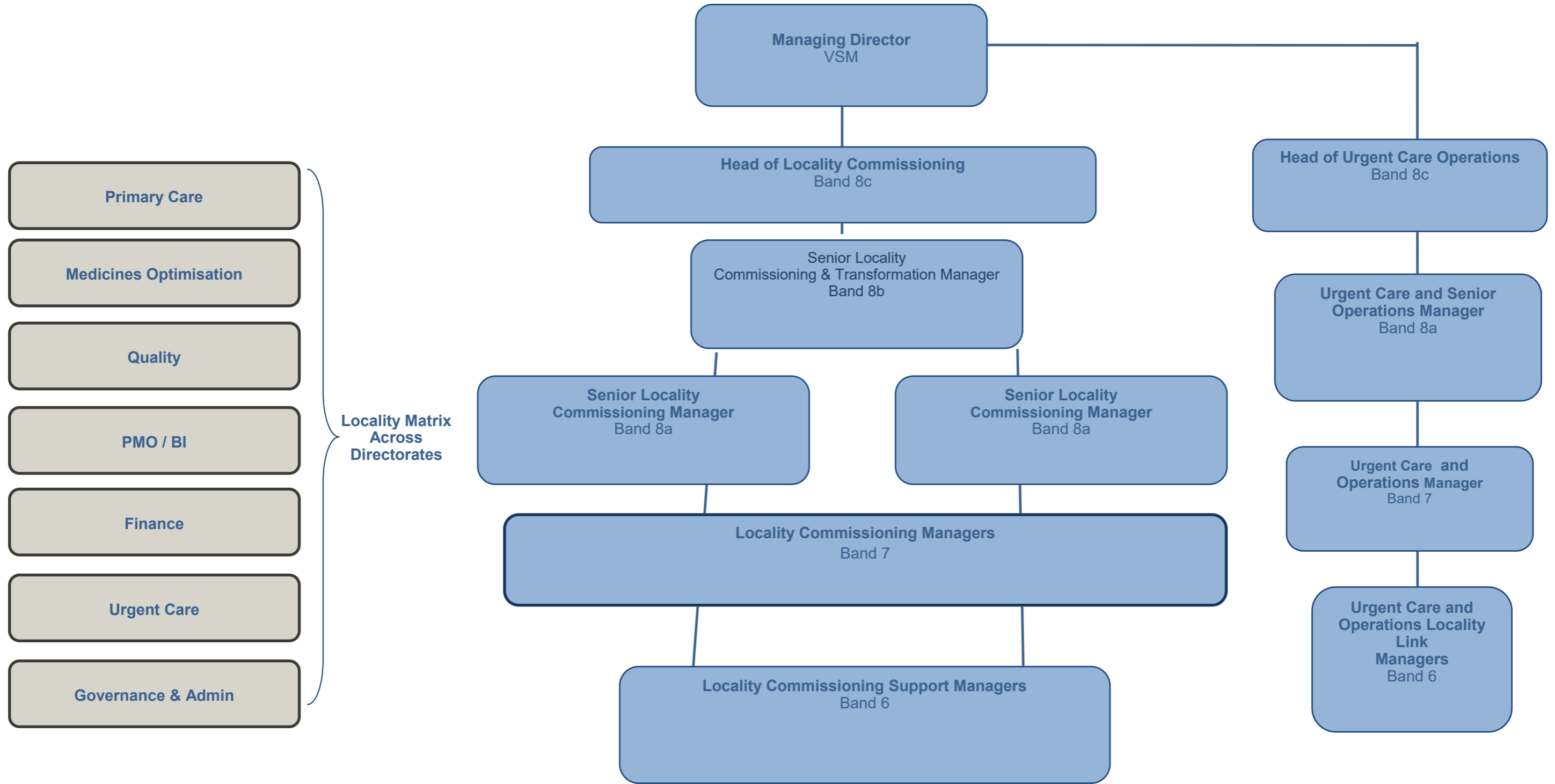


### NORTH STAFFS AND STOKE-ON-TRENT LOCALITY



Please note that the Choice and Referral Team numbers above do not include the temporary posts to manage the referrals from the South as part of the utilisation of NHS capacity system savings plan.

### SOUTH WEST LOCALITY



### SOUTH EAST LOCALITY

