

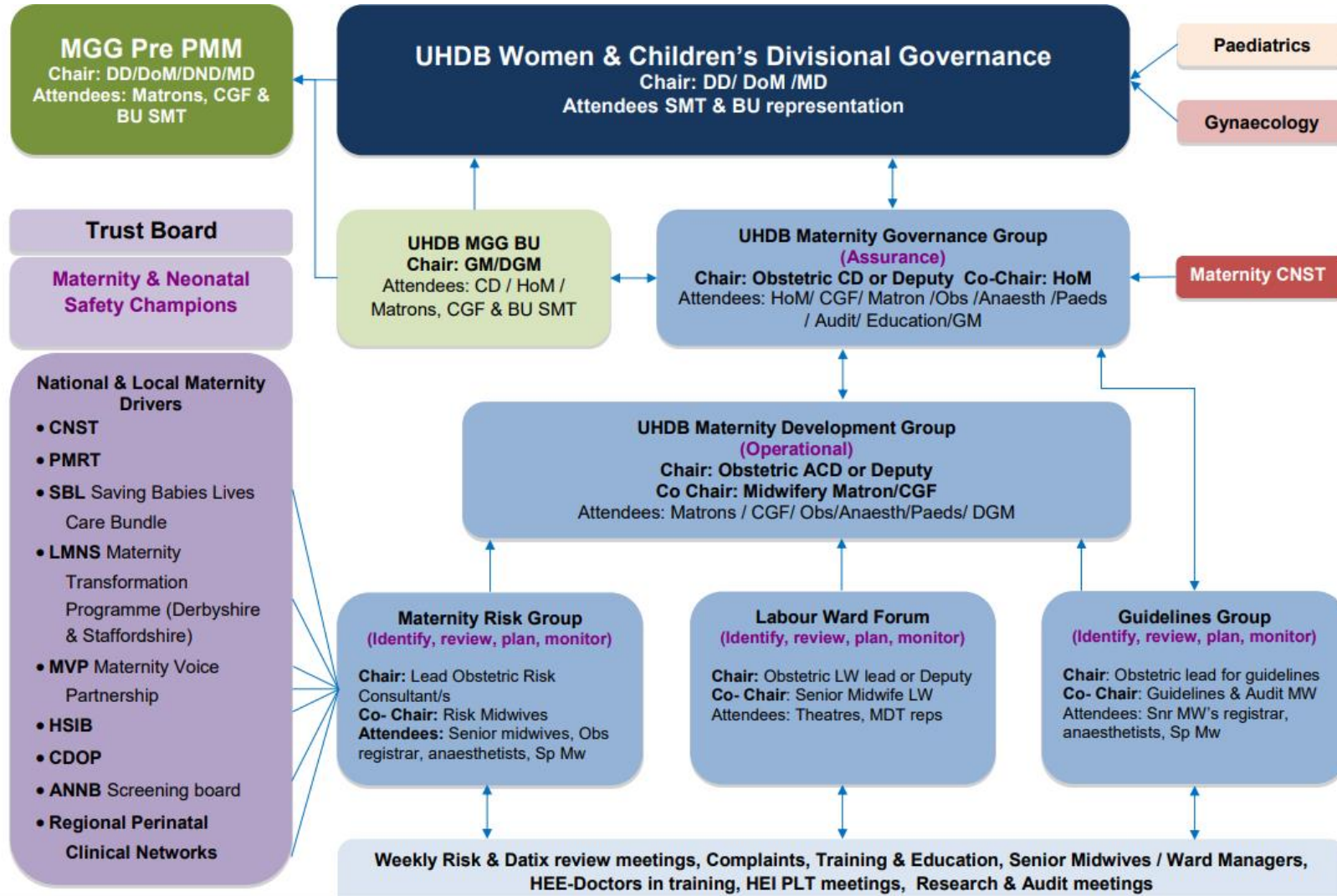
Maternity assurance map

Assurance Requirements	Tier 4 Maternity level Governance	Tier 3 Divisional Level Governance	Tier 2 Divisional leadership team	Divisional Performance review meetings - Check and challenge with executive team	Tier 1 QAK	Board Assurance	Local Maternity & Neonatal system - system wide assurance
Ockenden Recommendations	Not currently reported	Not currently reported	Not currently reported	Not currently reported	Quarterly • Report	Quarterly Report	Quarterly Report
NHS Resolution - Maternity Incentive Scheme	Some information reported Monthly • Maternity Safety and quality report (information on MIS compliance but not specific data on each section)	Some information reported Monthly • Maternity Safety and quality report (information on MIS compliance but not specific data on each section)	Monthly • Triple A report (this will be reported only if it features in the triple A's)	Monthly • Report	Quarterly • Via self-assessment report	Bi-monthly • Via self-assessment report	Quarterly • Via self-assessment report
Saving Babies Lives	Monthly (new information may be quarterly) • Maternity Safety and quality report (information on SBL compliance but not specific data on each section)	Monthly (new information may be quarterly) • Maternity Safety and quality report (information on SBL compliance but not specific data on each section)	Monthly • Triple A report (this will be reported only if it features in the triple A's)	Quarterly • Via self-assessment report	Quarterly • Via self-assessment report	Quarterly • Via self-assessment report	Quarterly • Via self-assessments and quarterly LMNS assessment
Birth rate Plus/ Staffing Levels	Monthly • Maternity Safety and quality report	Monthly • Maternity Safety and quality report	Monthly • Triple A report (this will be reported only if it features in the triple A's)	Monthly • PRM slides	Quarterly • Report	Quarterly • Report	Monthly • PQSG report
Equity and Equality	Monthly • Maternity Safety and quality report	Monthly • Maternity Safety and quality report	Monthly • Triple A report (this will be reported only if it features in the triple A's)	Quarterly • Report	Quarterly • Report	Quarterly • Report	Quarterly • Report
Serious incidents	Monthly • Maternity Safety and Quality report • Maternity Risk meeting	Monthly • Maternity Safety and quality report	Monthly • Triple A report (this will be reported only if it features in the triple A's)	Monthly • PRM slides	Monthly • Report	Alternate months • Report	Monthly • PQSG report

Maternity assurance map

Assurance Requirements	Tier 4 Maternity level Governance	Tier 3 Divisional Level Governance	Tier 2 Divisional leadership team	Divisional Performance review meetings - Check and challenge with executive team	Tier 1 Executive leadership team	Board Assurance	Local Maternity & Neonatal system - system wide assurance
Family Experience	Monthly <ul style="list-style-type: none"> Maternity Safety and quality report (complaints included every month, ad-hoc regional/national reports added) 	Monthly <ul style="list-style-type: none"> Maternity Safety and quality report (complaints included every month, ad-hoc regional/national reports added) 	Monthly <ul style="list-style-type: none"> Triple A report (this will be reported only if it features in the triple A's) 	Monthly <ul style="list-style-type: none"> PRM slides 	Monthly <ul style="list-style-type: none"> Report 	Bi-monthly <ul style="list-style-type: none"> Report 	Monthly <ul style="list-style-type: none"> PQSG report
Perinatal Mortality	Monthly <ul style="list-style-type: none"> Maternity Safety and Quality report Maternity Risk meeting 	Monthly <ul style="list-style-type: none"> Maternity Safety and quality report 	Monthly <ul style="list-style-type: none"> Triple A report (this will be reported only if it features in the triple A's) 	Monthly <ul style="list-style-type: none"> Report 	Quarterly <ul style="list-style-type: none"> Report 	Alternate Months <ul style="list-style-type: none"> Report 	Monthly <ul style="list-style-type: none"> PQSG report
Antenatal And Newborn Screening Programme	Monthly <ul style="list-style-type: none"> Maternity Risk meeting Quarterly <ul style="list-style-type: none"> ANNB board meeting 	Not currently reported	On Exception only basis	On Exception only basis	On Exception only basis	On Exception only basis	On Exception only basis
Quality and Safety	Monthly <ul style="list-style-type: none"> Maternity Dashboard Continuous quality monitoring report 	Monthly <ul style="list-style-type: none"> Maternity Safety and quality report 	Monthly <ul style="list-style-type: none"> Triple A report (this will be reported only if it features in the triple A's) 	Monthly <ul style="list-style-type: none"> PRM slides 	Quarterly <ul style="list-style-type: none"> Report 	Alternate Months <ul style="list-style-type: none"> Report 	Monthly <ul style="list-style-type: none"> PQSG report
NHSE/I maternity Self-Assessment	Annually	Annually	Annually	Annually	Annually	Annually	Annually
ATAIN	Monthly <ul style="list-style-type: none"> Maternity Risk meeting 	Monthly <ul style="list-style-type: none"> Maternity Safety and quality report Continuous quality monitoring report 	Monthly <ul style="list-style-type: none"> Triple A report (this will be reported only if it features in the triple A's) 	Reported by paediatrics	Reported by paediatrics	Reported by paediatrics	Reported by paediatrics
Training	Monthly <ul style="list-style-type: none"> Maternity Safety and Quality Report 	Monthly <ul style="list-style-type: none"> Maternity Safety and quality report 	Monthly <ul style="list-style-type: none"> Triple A report (this will be reported only if it features in the triple A's) 	Monthly <ul style="list-style-type: none"> PRM slides 	Quarterly <ul style="list-style-type: none"> Report 	Alternate Months <ul style="list-style-type: none"> Report 	Monthly <ul style="list-style-type: none"> 72207PQSG report

Current governance structure



Division: Women and children

