

[View this email in your browser](#)



**Staffordshire and
Stoke-on-Trent**
Integrated Care Board



As the days brighten, we're delighted to share new updates, emerging insights, and more opportunities for you to help shape health and care services across Staffordshire and Stoke-on-Trent.

Your voices continue to guide our work, and with almost 2,800 people now part of the People's Panel, your lived experiences and ideas are helping us understand what really matters to local communities.

This spring, we're building on that momentum with new conversations, early findings from your feedback, and opportunities to stay involved as we grow a more open, responsive, and people-centred approach to care.

Thank you.

Alex,

NHS Staffordshire and Stoke-on-Trent Integrated Care Board People's Panel

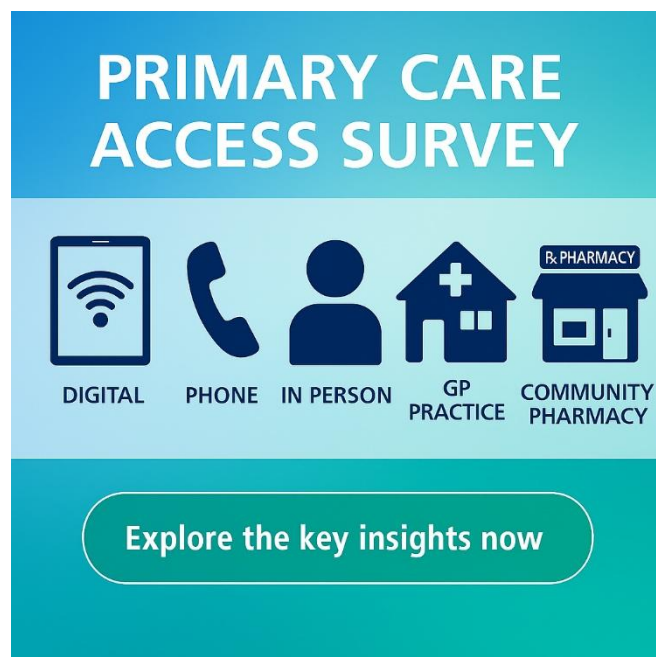
Tel: General 0800 0996 422

Email: people.panel@direct-data-analysis.co.uk

Primary Care Access Survey results

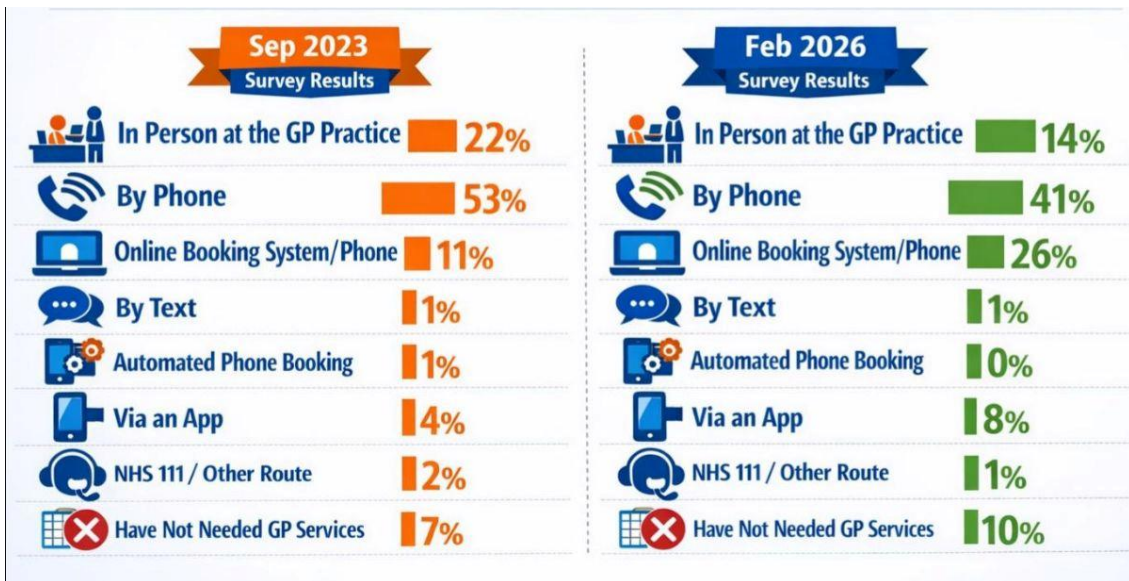
Thank you to the 943 people who completed our recent Primary Care Access Survey!

Your feedback is now being reviewed, and we will share the full results on our [website](#) in April. However, initial analysis from two key questions, compared with the previous survey, is outlined below.



Explore the key insights now

In the past 12 months, what was the most recent method used to contact your GP surgery?



Between September 2023 and February 2026, there was a clear shift in how people contacted their GP surgeries. Phone use dropped from 53% to 41%, while online booking surged from 11% to 26%, reflecting a growing preference for digital access. In-person visits also declined from 22% to 14%, and app usage doubled from 4% to 8%.

These changes suggest increasing confidence in online tools and a gradual move away from traditional contact methods.



How would you rate the overall experience of the service you received from your GP practice on your latest visit?



Between September 2023 and February 2026, patient satisfaction with GP practice visits improved notably: the proportion rating their experience as “Very good” rose from 43% to 54%, while negative ratings (“Poor” and “Very poor”) halved from a combined 10% to just 6%, indicating a clear upward trend in overall service perception.

Survey prize draw winners announced!

We're delighted to congratulate our prize draw winners for the Primary Care Access Survey:

-  Christine from Newcastle-under-Lyme
-  Linda from Lichfield

Each winner received a £50 Love2Shop voucher as a thank-you for sharing their views.

Attend an upcoming ICB Board meeting or submit a question to the Board



Our Integrated Care Board (ICB) meets bi-monthly, and members of the public are welcome to observe the discussion and decision-making that shapes NHS services across Staffordshire and Stoke-on-Trent.

If you'd like to join a meeting — either in person or online — please email Stw.board@nhs.net at least 24 hours in advance with your name, organisation (if applicable), and how you'd prefer to attend. Seating is limited and allocated on a first-come, first-served basis.

Board papers will be published a week before each meeting, and questions linked to agenda items can be submitted ahead of time to ICS.info@staffsstoke.icb.nhs.uk

You can find our more, along with details of past Board Meetings [here](#).

Stoke-on-Trent Community Diagnostic Centre



University Hospitals of North Midlands is set to open a new community diagnostic centre in Stoke-on-Trent.

The £42.6 million Stoke-on-Trent Community Diagnostic Centre (CDC) is located at the old Sainsbury's site, Hanley, offering a range of diagnostic services, including MRI, CT, ultrasound scans, and X-rays, all without the need for patients to travel to the hospital.

The new centre will provide people with faster, more convenient access to essential diagnostic services and is due to open April 2026.

Find our more [here](#).

Around 2 in 5 eligible people in Staffordshire and Stoke-on-Trent are still to receive their RSV vaccine

 RSV vaccine uptake in Staffordshire and Stoke-on-Trent

As of early 2026, around 2 in 5 eligible people in Staffordshire and Stoke-on-Trent have not yet received their RSV vaccine, prompting renewed calls from NHS leaders to boost uptake.

The NHS is urging people who are eligible for the respiratory syncytial virus (RSV) vaccine to come forward, as thousands across Staffordshire and Stoke-on-Trent remain unprotected.

You can find out more [here](#).

Free suicide prevention and awareness training

Free suicide awareness training for anyone in Staffordshire, offering a half-day course and a 30-minute e-learning module to help you spot risks, use simple interventions, and direct people to support.

This training is available to individuals, businesses, clubs, groups, and organisations across Staffordshire. Training can be undertaken through either of the following courses.




- Suicide Awareness and Prevention Training (half-day online training)
- Suicide Awareness Training (online e-learning course):


You can find out more and book your place [here](#).

FREE monthly virtual sessions for parents & carers in Staffordshire



The Families' Health & Wellbeing Service 0-19 run friendly, information online groups for families living in Staffordshire (not including Stoke-on-Trent) covering a wide range of topics to support you and your family.

-  Sessions are led by experienced health visitors.
-  Ask questions or just listen in, camera on or off, it's up to you!
-  From pregnancy to parenting tips, nutrition & wellbeing.

✦ Book your place today, just follow the link below and select the "Virtual Session" dropdown:  www.mpft.live/cde

You can find more about the Families Health and Wellbeing 0-19 service [here](#).

Download the free NHS food scanner app



Scan, swipe, swap!

Just scan the barcodes of your family's favourite foods, swipe to see the healthier options available, and make a swap next time you shop!

Use the NHS Food Scanner to bring food labels to life! A quick scan of the barcode on the product's packaging using your phone's camera will show you: If it's a 'Good choice'

Traffic light ratings - See at a glance whether the product is high, medium or low in sugar, salt and fat.

Living labels! - A fun augmented reality feature helps you celebrate your good choices.

All your previous scans.

Get the NHS Food Scanner app [here](#).

Supporting care leavers into employment in Staffordshire



Staffordshire County Council provides a structured set of services to help care leavers (aged 16–25) move into work, training, or further education. This includes Personal Adviser support, pathway planning, and targeted financial help.

There are currently two programmes to support young people leaving care: Leaflets for the two programmes are available below.

- **Own your future** [here](#).
 - **Pathway to success** [here](#).
-

Understanding weight management for people diagnosed with a learning disability or autism

Staffordshire and Stoke-on-Trent Integrated Care Board (ICB) is interested in hearing how people with learning disabilities and autism manage their weight.

We want to hear from people who have been diagnosed with one or more learning disabilities, or autism, and people who care for them to understand how the ICB can provide better support or services to support healthy lifestyles.

We want to know how people diagnosed with a learning disability or autism, and people who care for them, access information about healthy eating and exercise. We also want to hear about any groups people use to help them live healthily.

You can find the survey, which closes at midnight on Sunday 22 March, on the ICB website or link below.

[Weight Management Survey](#)

Autism Inclusion Team



Staffordshire's support for inclusive education, working with children and young people who have a diagnosis, or working diagnosis of autism.

The Autism Inclusion Team (AIT) sits at the heart of Staffordshire's support for inclusive education, working with children and young people who have a diagnosis, or working diagnosis of autism. They work in partnership with nurseries, mainstream schools, and further education settings to provide specialist guidance, practical strategies, and tailored advice to staff, families, and pupils.

The team's focus is to help every autistic young person thrive, ensuring the right support grows alongside them as they move through their educational journey.

🔗 **Find out more about the Autism Inclusion Team [here](#).**

Staffordshire & Stoke-on-Trent People's Panel: Membership snapshot

Our People's Panel now brings together 2,758 (February 2026) local voices from every district.

Together, we're shaping better health and care for Staffordshire and Stoke-on-Trent.

Total Active Membership

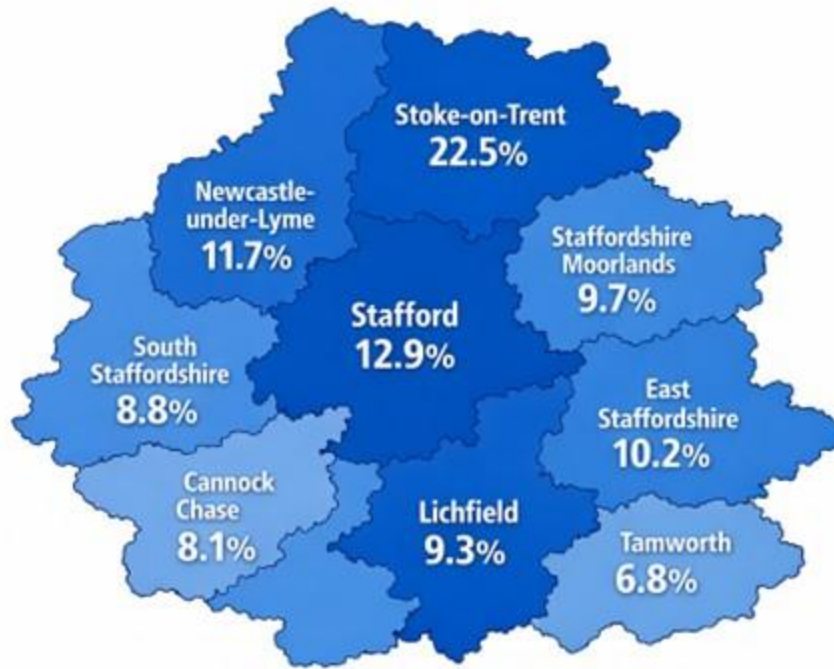
End of February 2026:

2,758 members

A panel that reflects our communities

Our current panel membership closely matches the population profile of Staffordshire and Stoke-on-Trent, based on Office for National Statistics (ONS) 2021 Census data.

Larger districts show higher levels of participation, while smaller areas are represented in proportion to their population size.



Where Did You Hear About the Panel?

(June 23 to December 2025 new members)



Help us spread the word — invite someone to join the People's Panel



We're looking for residents across Staffordshire and Stoke-on-Trent to share their views and help improve local NHS services.

By joining the People's Panel, you'll have the chance to influence real change and take part in quick surveys throughout the year.

If you know someone who'd like to get involved, please pass this on — every voice strengthens the conversation.

Find out more and join the People's Panel [here](#).

[🔍](#) Search Staffordshire and Stoke-on-Trent ICB People's Panel while on [Facebook](#).



[Forward this email](#)

You are receiving this email as a member of the People's Panel.

Our mailing address is:

NHS Staffordshire and Stoke-on-Trent Integrated Care Board People's Panel
Brampton Business Centre
10 Queen Street
Newcastle, Staffordshire ST5 1ED
United Kingdom